

Review Lake McConaughy Operating Rules

Lake McConaughy Ops

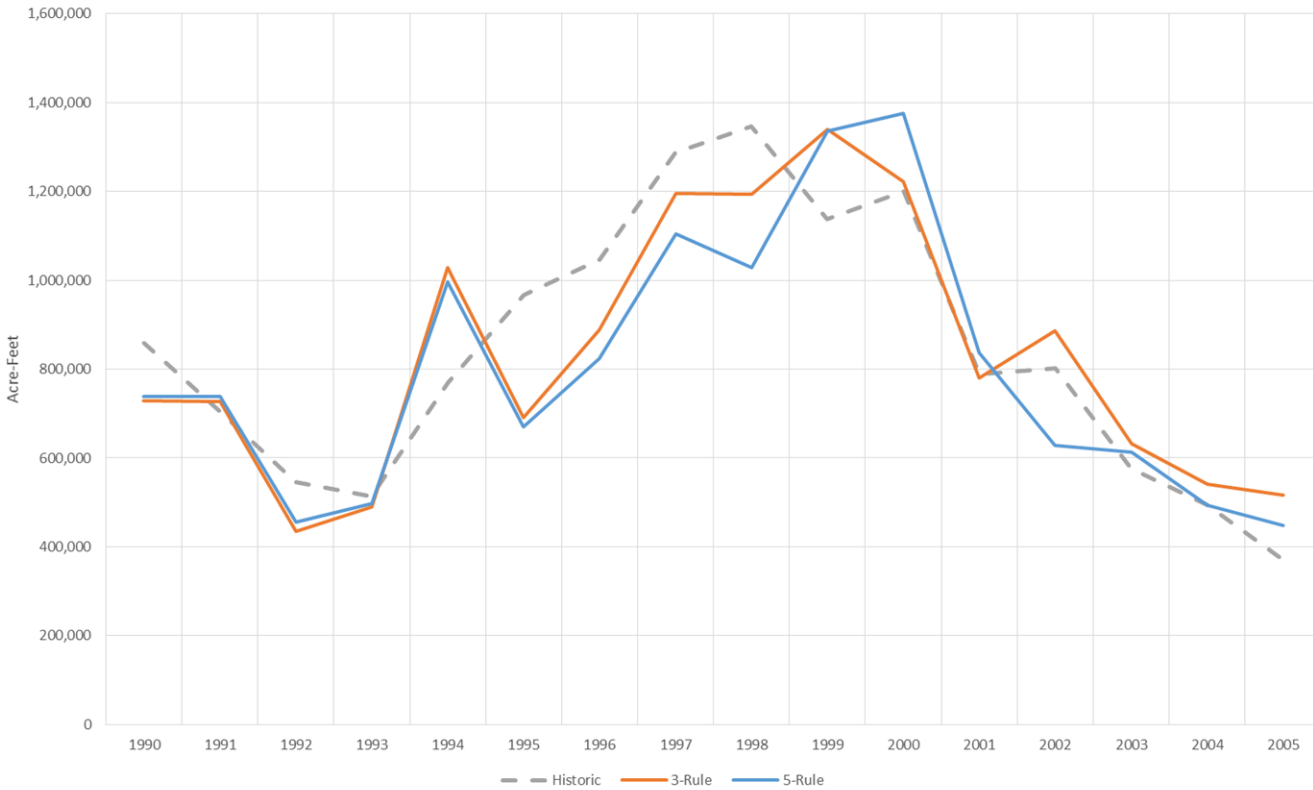
3-Rule vs. 5-Rule Operations

Lake McConaughy Operations

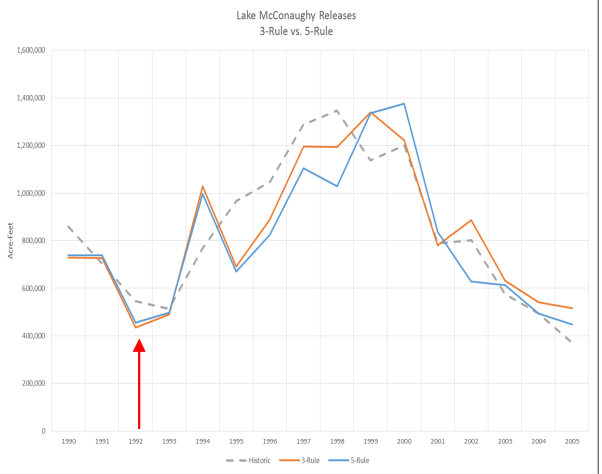
	Operating Modes	Carryover Volume Threshold (AF)	FERC Minimum Releases (cfs)	Streamflow/ Snowpack	Extra Release for NPPD Power Generation (Spring)	Extra Lake McConaughy Release
3-Rule	Dry	< 1,056,000	250	Operating Mode by Carryover Only		
	Transitional		450			
	Wet	> 1,500,000	700			
5-Rule	Dry Dry	< 350,000	0 (Waiver)	Operating Mode by Carryover or CO Snowpack & WY Streamflow Predictions		
	Dry	< 650,000	325			
	Average	< 1,400,000	400			
	Wet	< 1,550,000	650			
	Wet Wet	> 1,550,000	650		3000 AF	2000 AF

Lake McConaughy Operations

Lake McConaughy Releases
3-Rule vs. 5-Rule

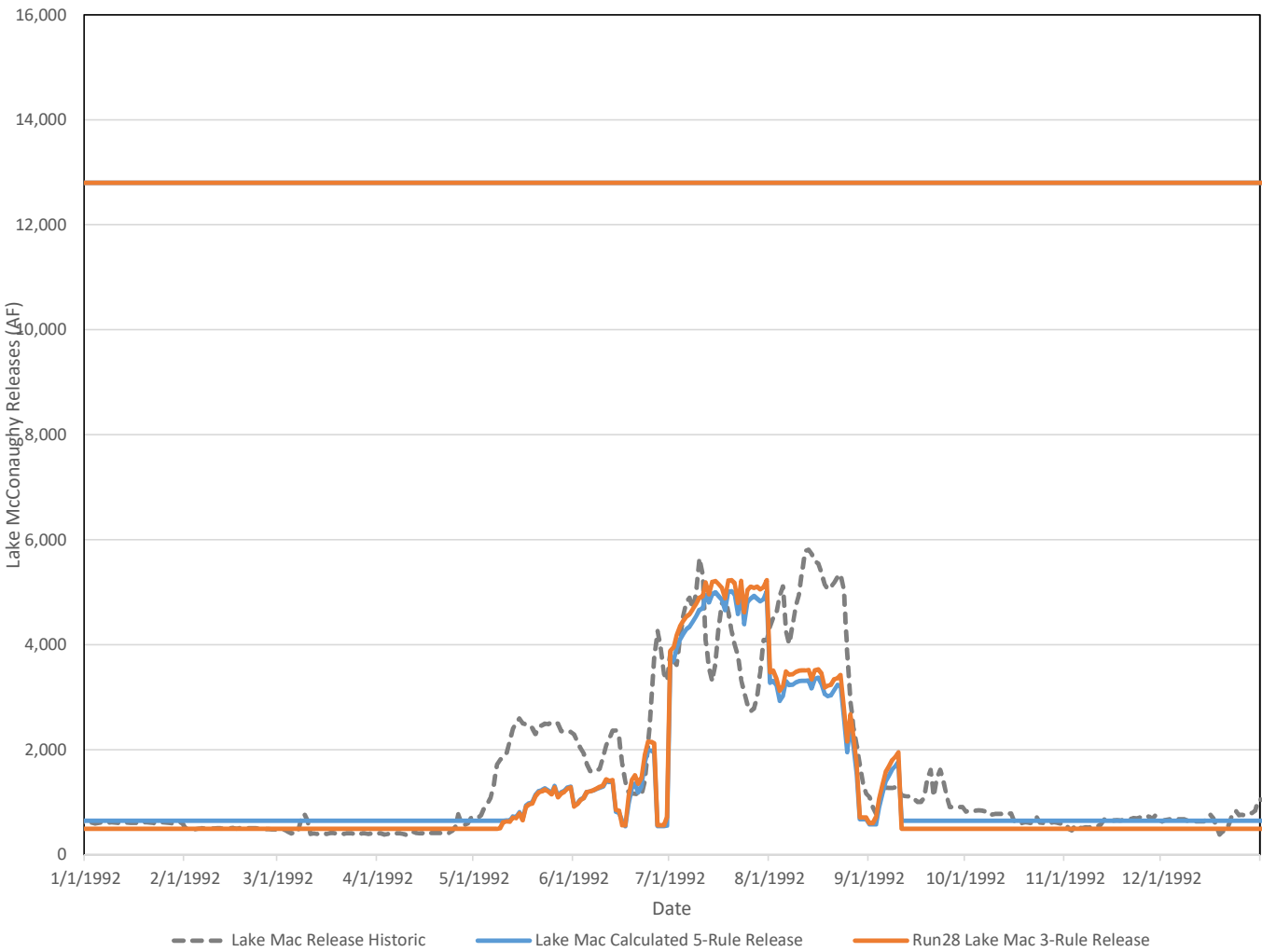


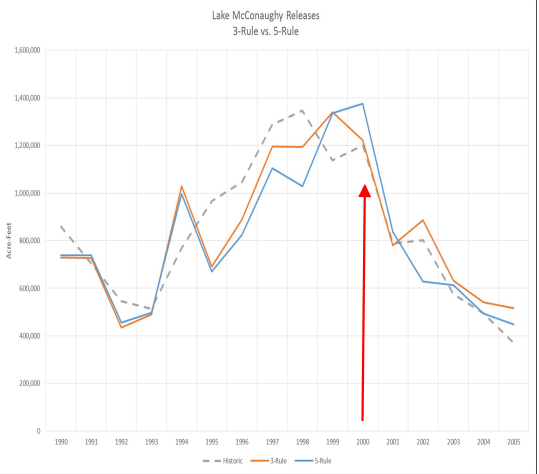
Year	Historic	3-Rule	5-Rule
1990	859,330	728,128	738,406
1991	704,360	726,905	738,570
1992	545,100	434,484	455,518
1993	513,600	489,357	497,451
1994	769,890	1,028,574	995,653
1995	966,650	691,055	670,662
1996	1,045,830	889,009	824,061
1997	1,287,650	1,194,983	1,105,408
1998	1,346,230	1,193,322	1,028,666
1999	1,136,960	1,339,150	1,335,655
2000	1,199,780	1,222,773	1,375,326
2001	788,220	780,079	836,730
2002	802,330	886,714	627,688
2003	576,730	633,053	613,101
2004	495,460	541,176	493,508
2005	371,720	516,536	447,690
Total	13,409,800	13,295,300	12,784,095



1992	Annual Release (AF)
Historic	545,000
3-Rule	434,484
5-Rule	455,518

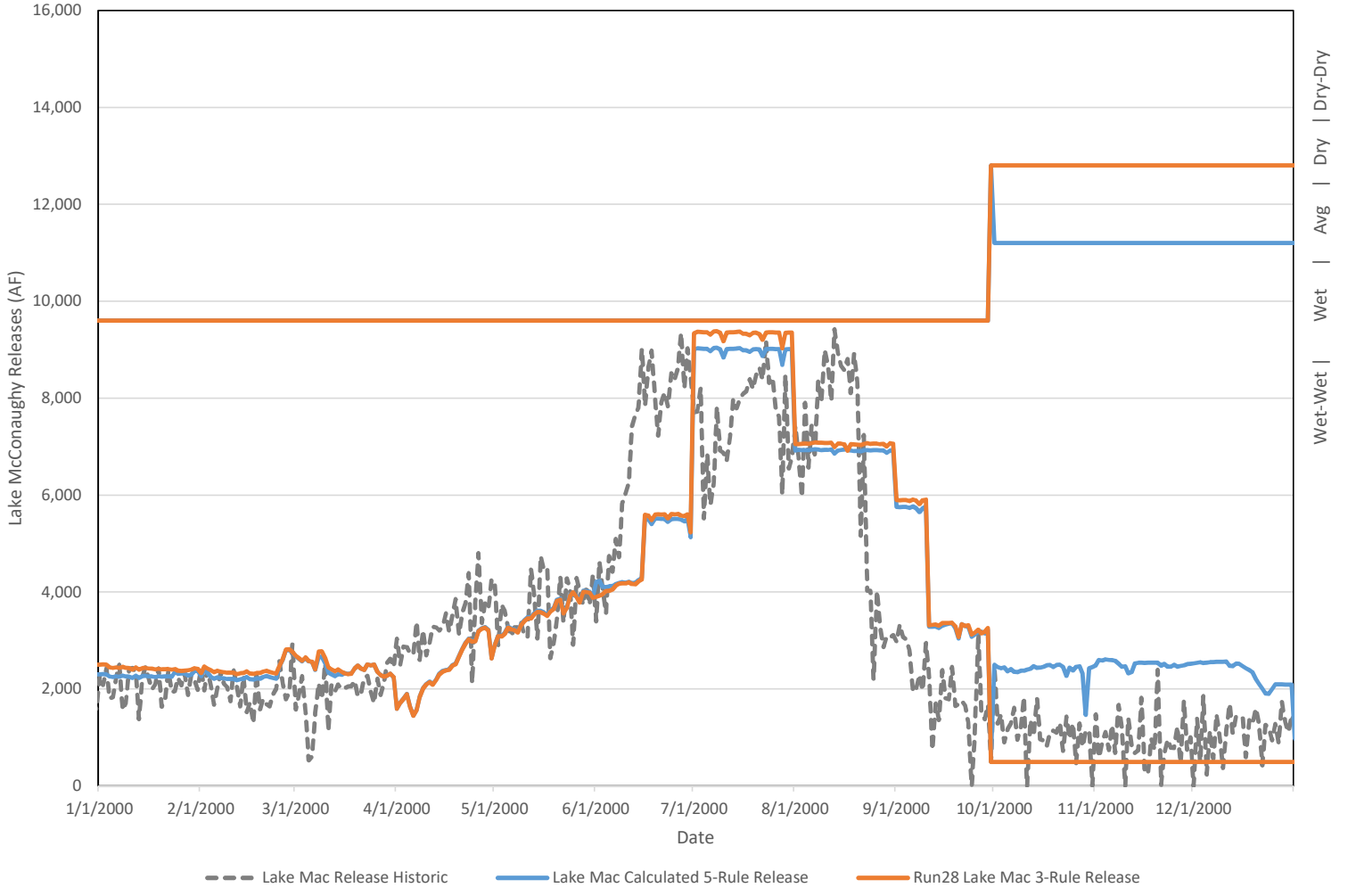
	S. Platte Snow Pack	N. Platte Streamflow
Jan	90%	70%
Feb	85%	60%
Mar	76%	70%
Apr	94%	70%
May	64%	70%

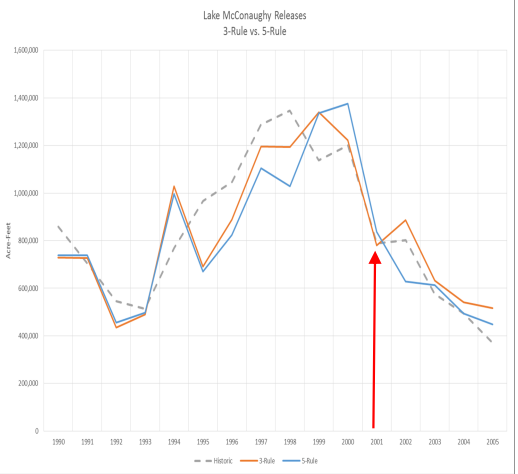




2000	Annual Release (AF)
Historic	1,199,780
3-Rule	1,222,773
5-Rule	1,375,326

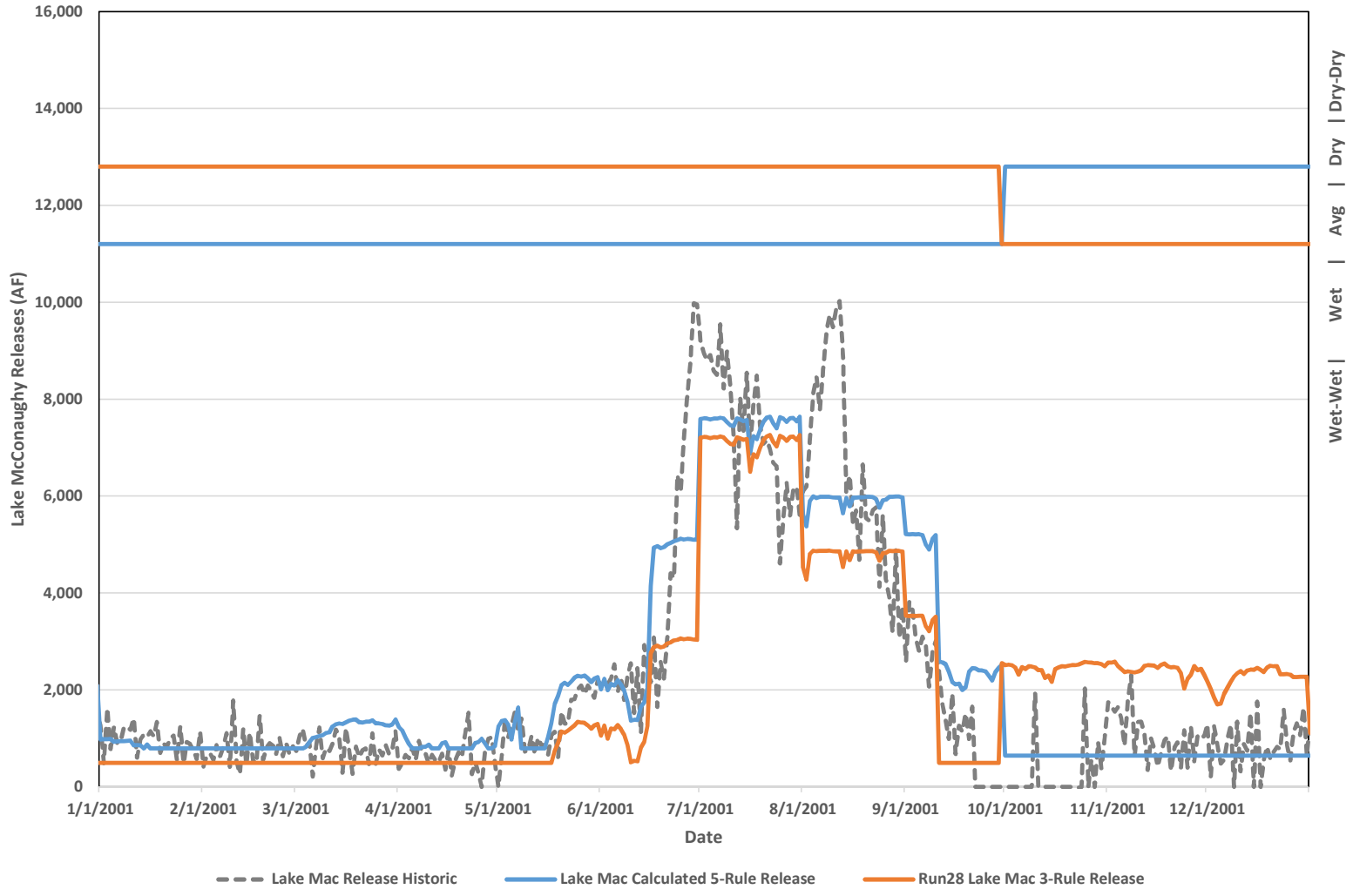
	S. Platte Snow Pack	N. Platte Streamflow
Jan	62%	47%
Feb	82%	63%
Mar	86%	83%
Apr	93%	81%
May	64%	72%

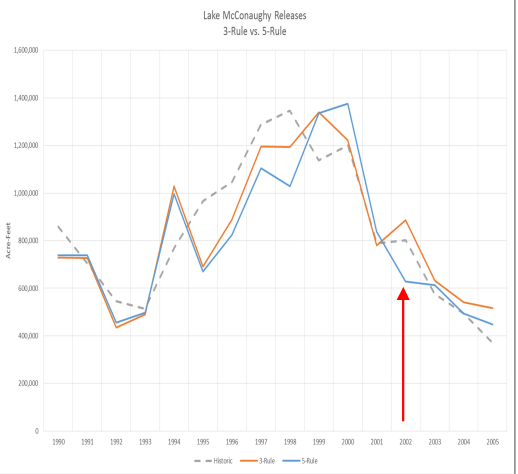




2002	Annual Release (AF)
Historic	802,330
3-Rule	886,814
5-Rule	627,688

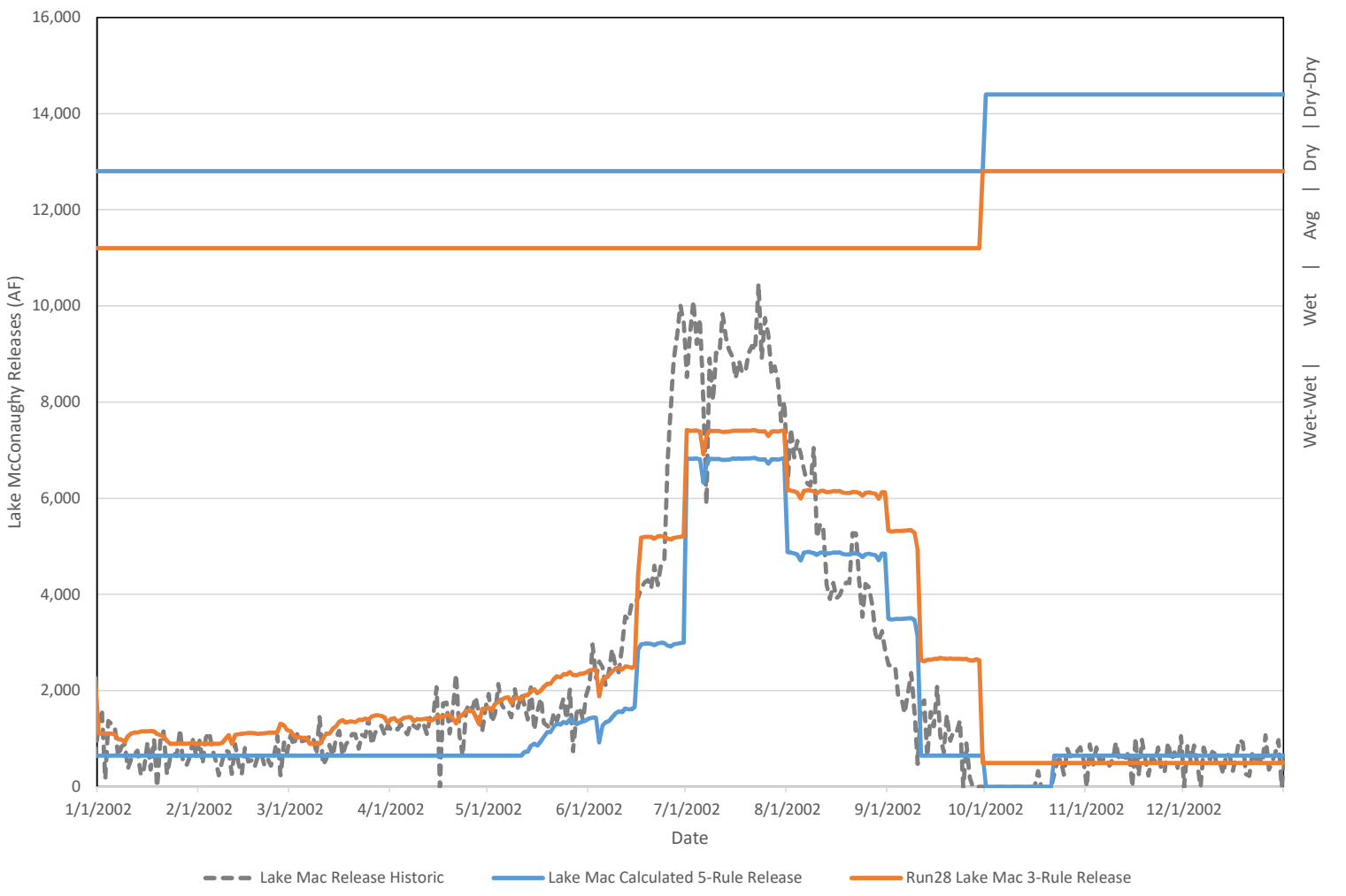
	S. Platte Snow Pack	N. Platte Streamflow
Jan	84%	88%
Feb	65%	62%
Mar	69%	74%
Apr	81%	48%
May	80%	52%

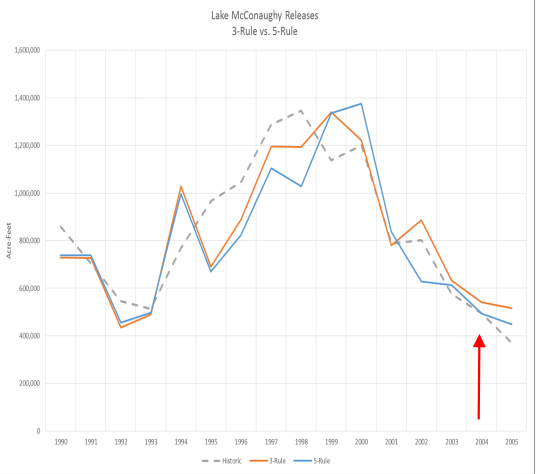




2002	Annual Release (AF)
Historic	802,330
3-Rule	886,814
5-Rule	627,688

	S. Platte Snow Pack	N. Platte Streamflow
Jan	54%	49%
Feb	49%	39%
Mar	52%	43%
Apr	54%	32%
May	59%	23%





2004	Annual Release (AF)
Historic	495,460
3-Rule	541,176
5-Rule	493,508

	S. Platte Snow Pack	N. Platte Streamflow
Jan	67%	98%
Feb	65%	98%
Mar	69%	83%
Apr	51%	47%
May	65%	40%

