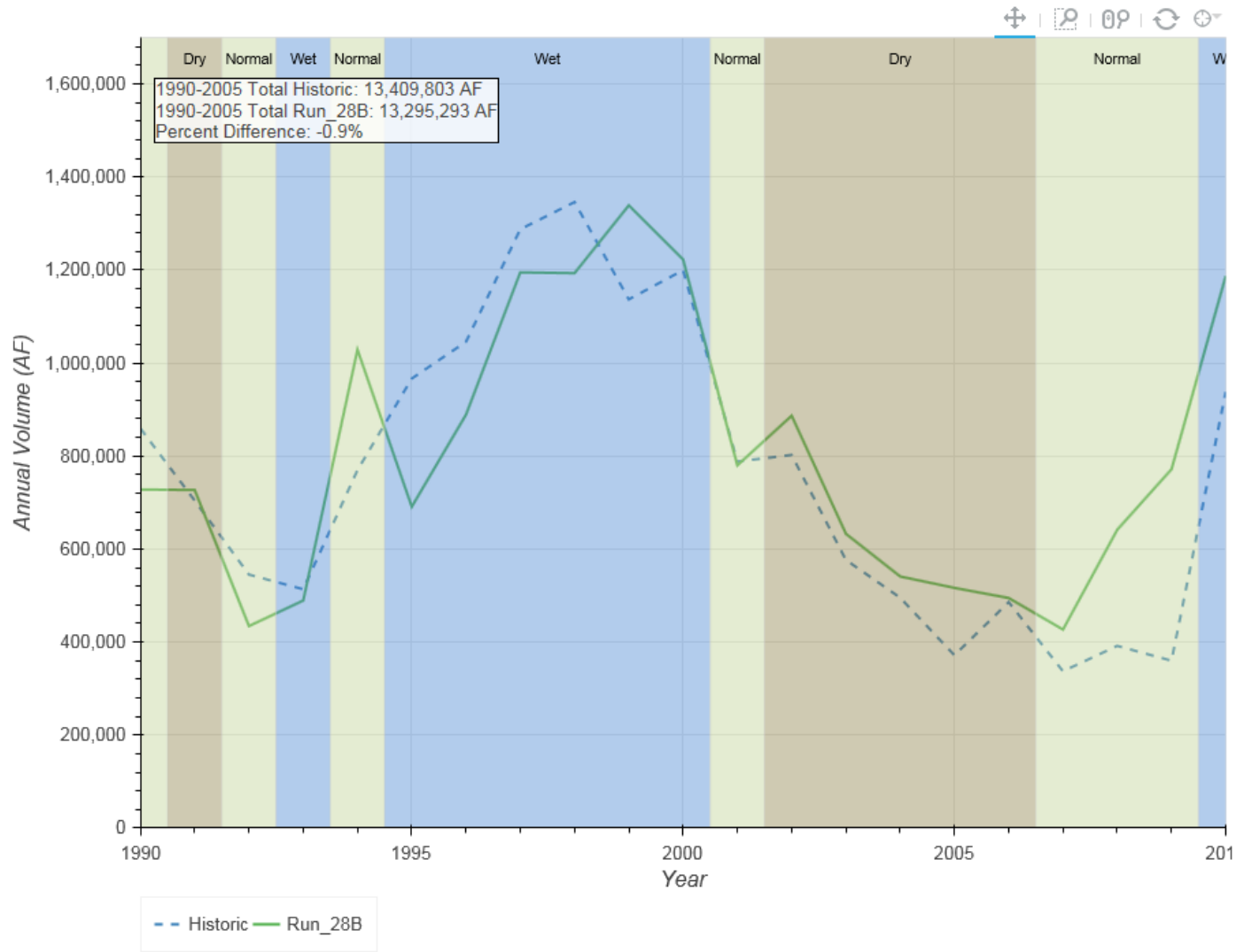


Integrated Model Calibration Results – Main Stem Gages

Appendix 8-A contains integrated calibration results for the Platte River main stem gages. Figures include annual and daily simulated and historic flows plotted for each gage for the period 1990-2010. Daily plots include the cumulative differences between historic and modeled daily flow for each gage as well (simulated – historic; positive cumulative difference represents an over prediction by the model). The shaded background in the figures represents the annual wet/dry/normal hydrologic classification of the Platte River basin as determined by US F&WS and is included to assess model performance over varying hydrologic conditions. Finally, a summary table displays the total historic releases, total calculated (modeled) releases, and percent difference for the period 1990-2005. Gage locations include the following:

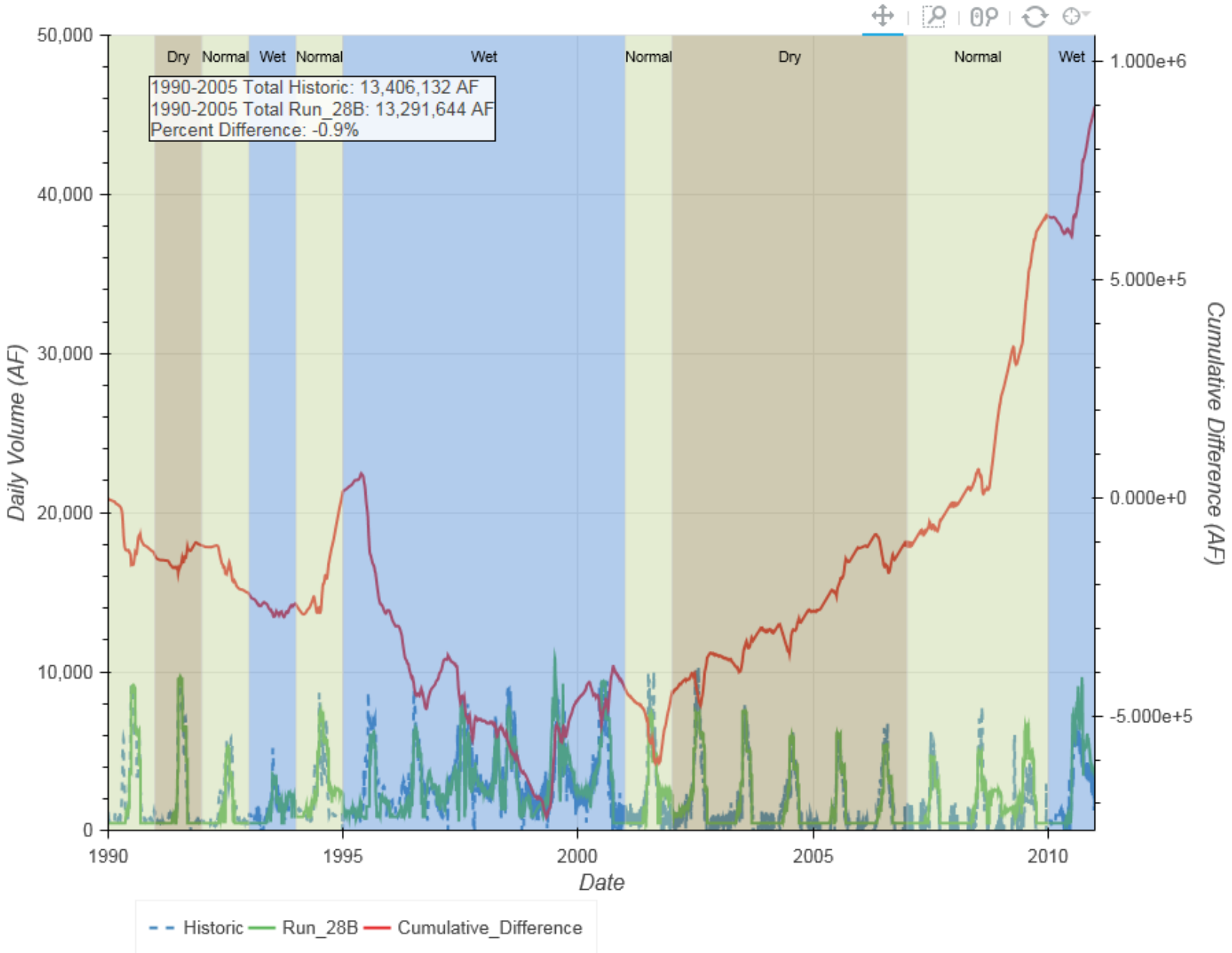
- Lake McConaughy Releases
- North Platte River at Keystone
- North Platte River at North Platte
- South Platte River at Roscoe
- South Platte River at North Platte
- Platte River at North Platte
- Platte River at Brady
- Platte River at Cozad
- Platte River near Overton
- Platte River nr Odessa
- Platte River nr Grand Island
- Platte River at Duncan

Lake McConaughy Releases

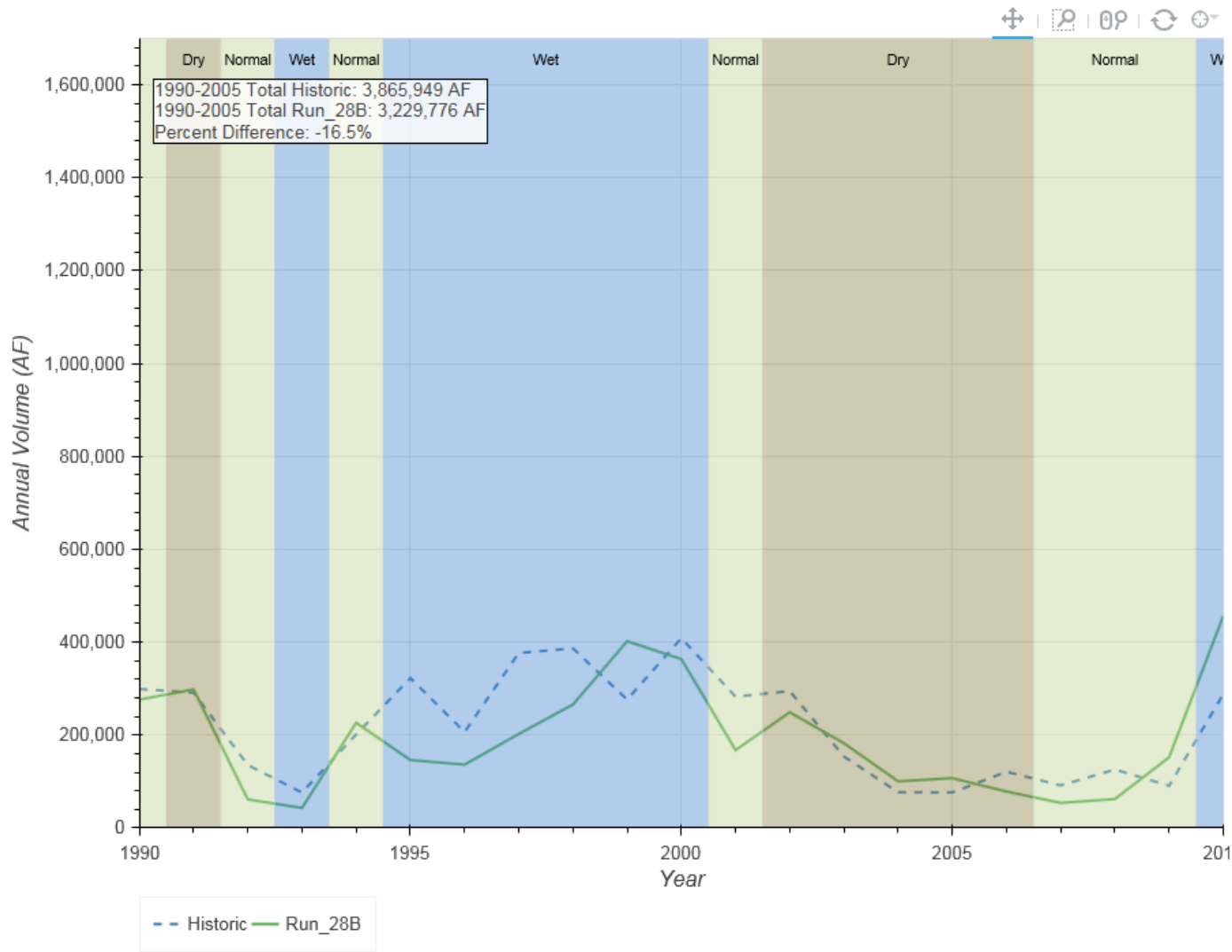


Year	Historic	Run_28B
1990	859,330	728,128
1991	704,356	726,905
1992	545,093	434,484
1993	513,605	489,357
1994	769,886	1,028,574
1995	966,646	691,054
1996	1,045,832	889,009
1997	1,287,647	1,194,983
1998	1,346,228	1,193,321
1999	1,136,955	1,339,150
2000	1,199,775	1,222,772
2001	788,214	780,079
2002	802,329	886,713
2003	576,730	633,052
2004	495,455	541,176
2005	371,722	516,536
2006	485,922	494,821
2007	337,240	426,929
2008	391,774	641,510
2009	359,974	771,563
2010	938,235	1,187,353
Total	15,922,948	16,817,469

Lake McConaughy Releases

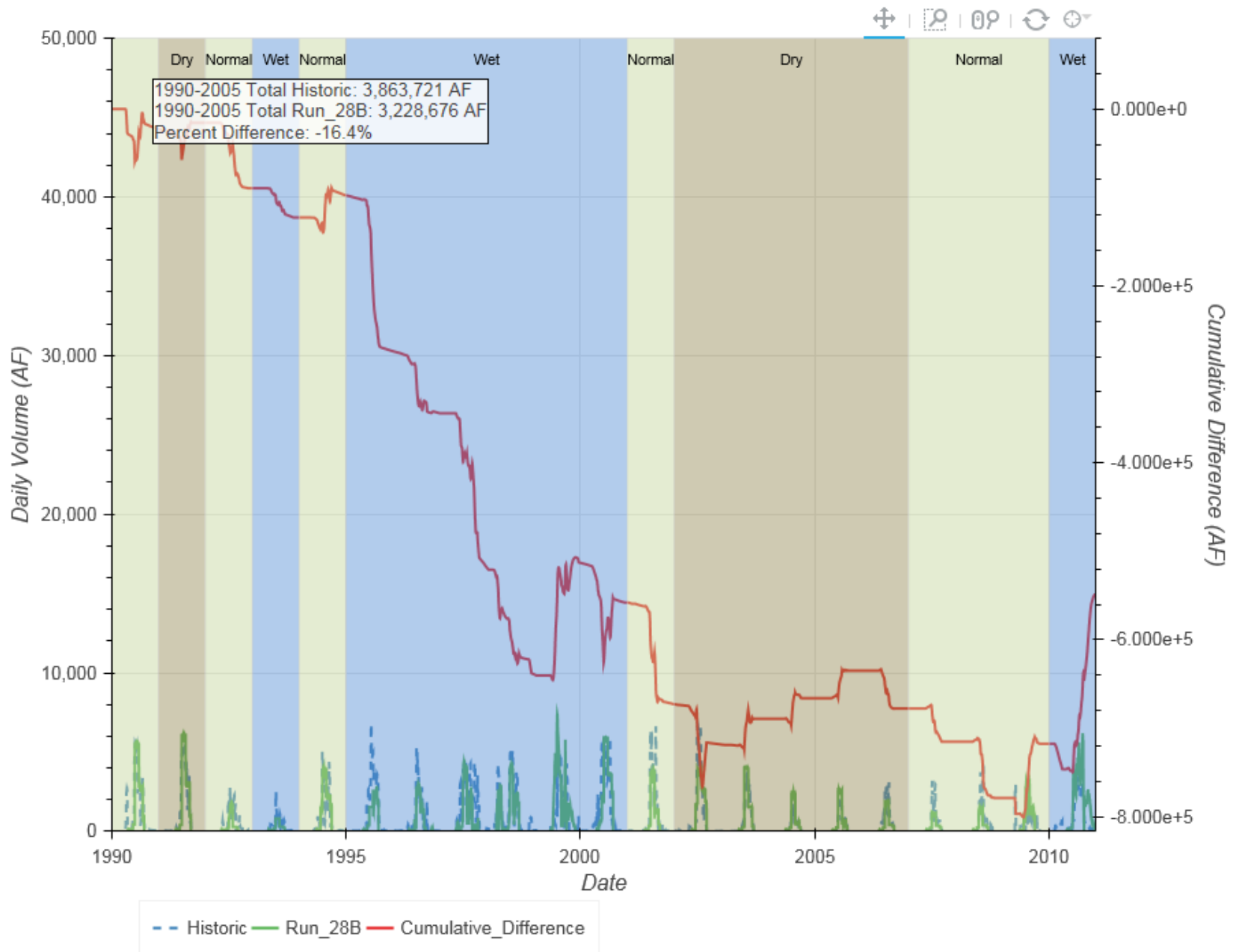


North Platte River at Keystone

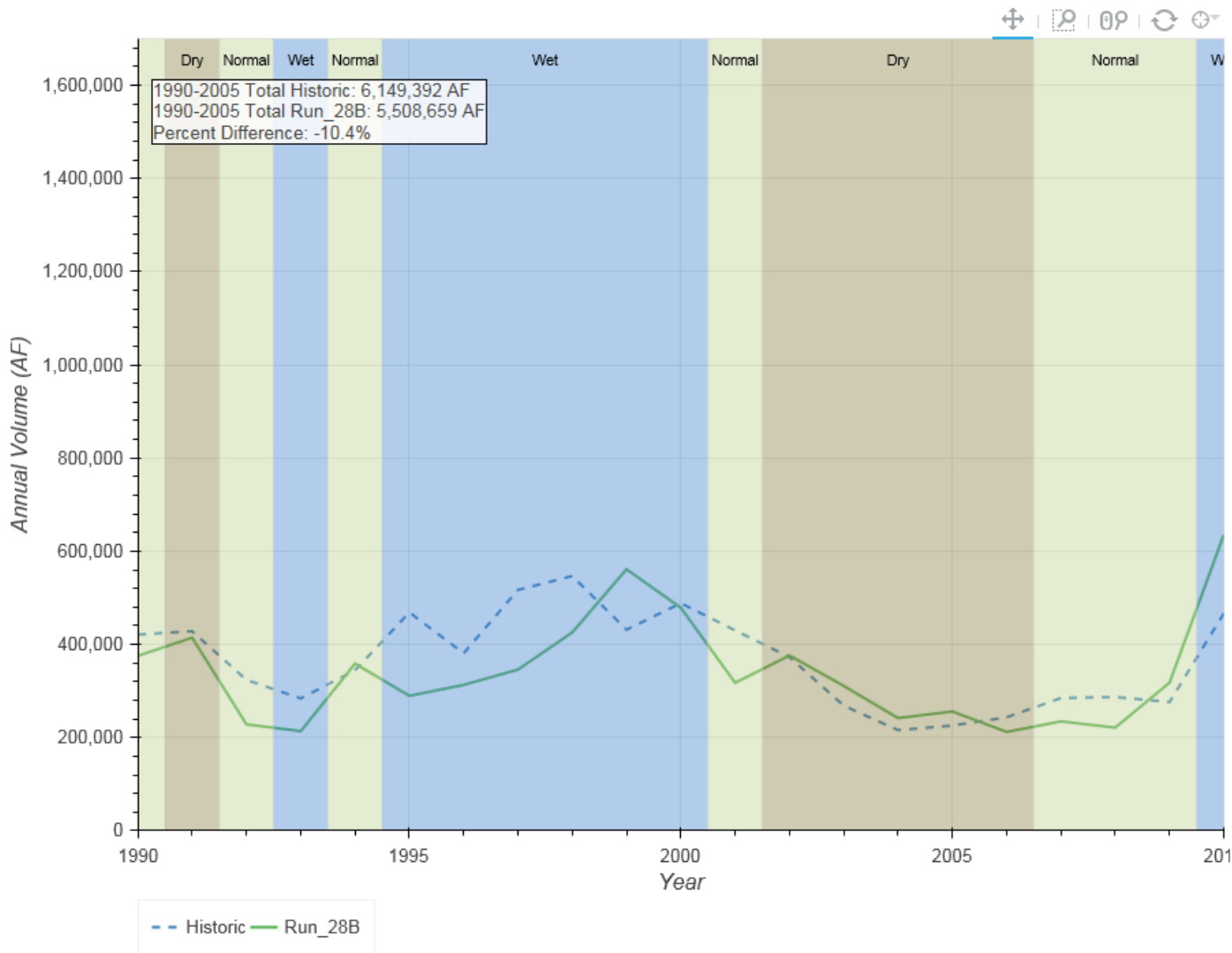


Year	Historic	Run_28B
1990	299,107	276,343
1991	291,368	298,333
1992	135,532	61,578
1993	76,216	43,191
1994	201,606	226,478
1995	322,602	146,324
1996	206,640	136,323
1997	376,744	202,544
1998	386,614	265,860
1999	276,421	402,133
2000	408,632	363,526
2001	282,679	167,664
2002	294,770	249,169
2003	153,688	182,570
2004	77,012	100,419
2005	76,318	107,321
2006	121,130	78,443
2007	91,646	54,037
2008	125,792	62,301
2009	90,912	152,217
2010	288,057	456,275
Total	4,583,486	4,033,049

North Platte River at Keystone

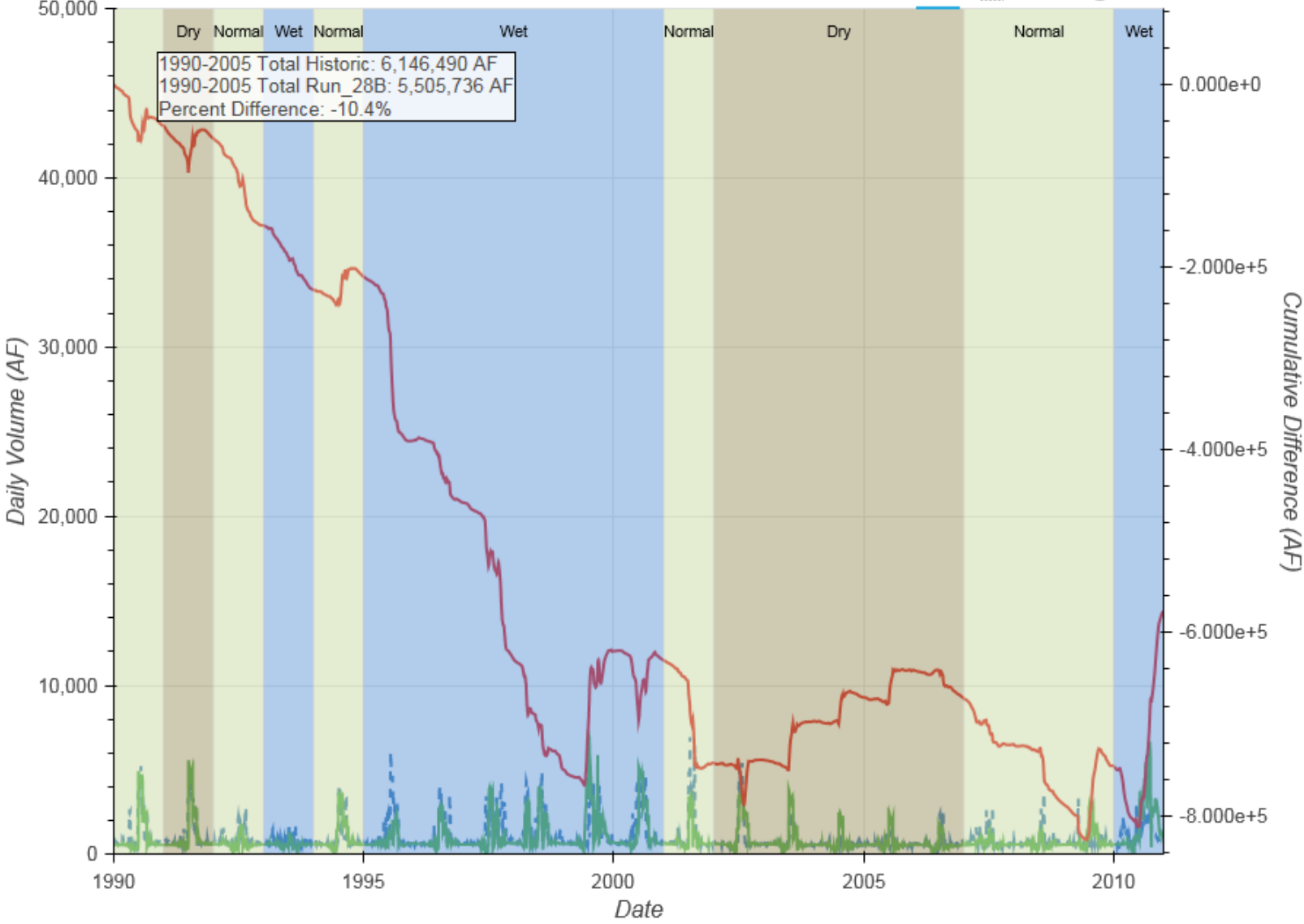


North Platte River at North Platte



Year	Historic	Run_28B
1990	421,201	375,501
1991	428,320	414,551
1992	323,795	228,417
1993	284,215	213,878
1994	344,437	358,767
1995	468,795	289,741
1996	380,996	313,094
1997	517,051	346,086
1998	546,769	425,771
1999	431,744	561,443
2000	488,633	478,545
2001	430,006	317,634
2002	372,894	376,288
2003	268,532	310,892
2004	216,045	241,976
2005	225,959	256,075
2006	243,520	212,272
2007	284,935	234,776
2008	287,188	221,489
2009	276,398	317,856
2010	466,828	635,644
Total	7,708,261	7,130,696

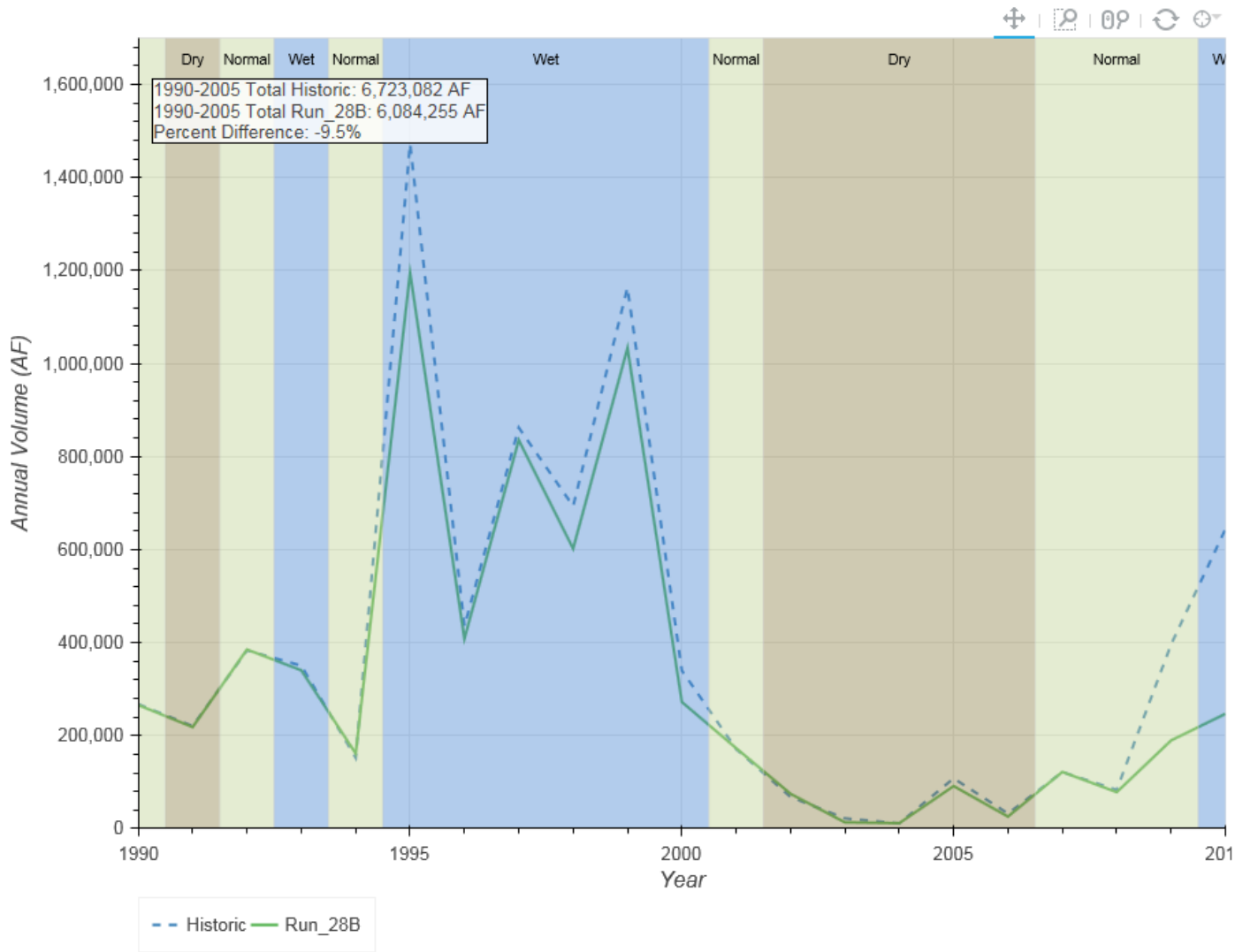
North Platte River at North Platte



- - Historic Run_28B Cumulative_Difference

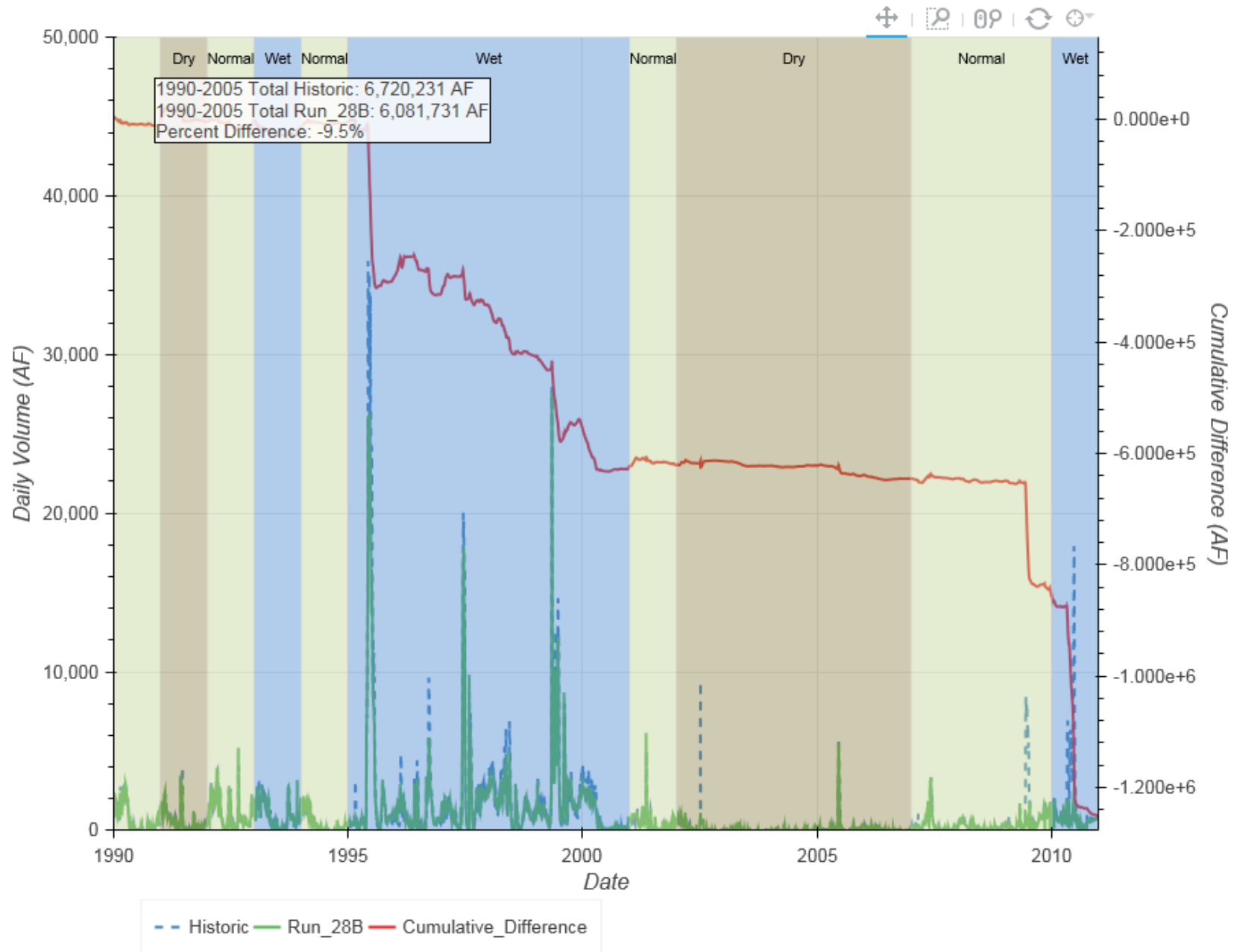
1990-2005 Total Historic: 6,146,490 AF
1990-2005 Total Run_28B: 5,505,736 AF
Percent Difference: -10.4%

South Platte River at Roscoe

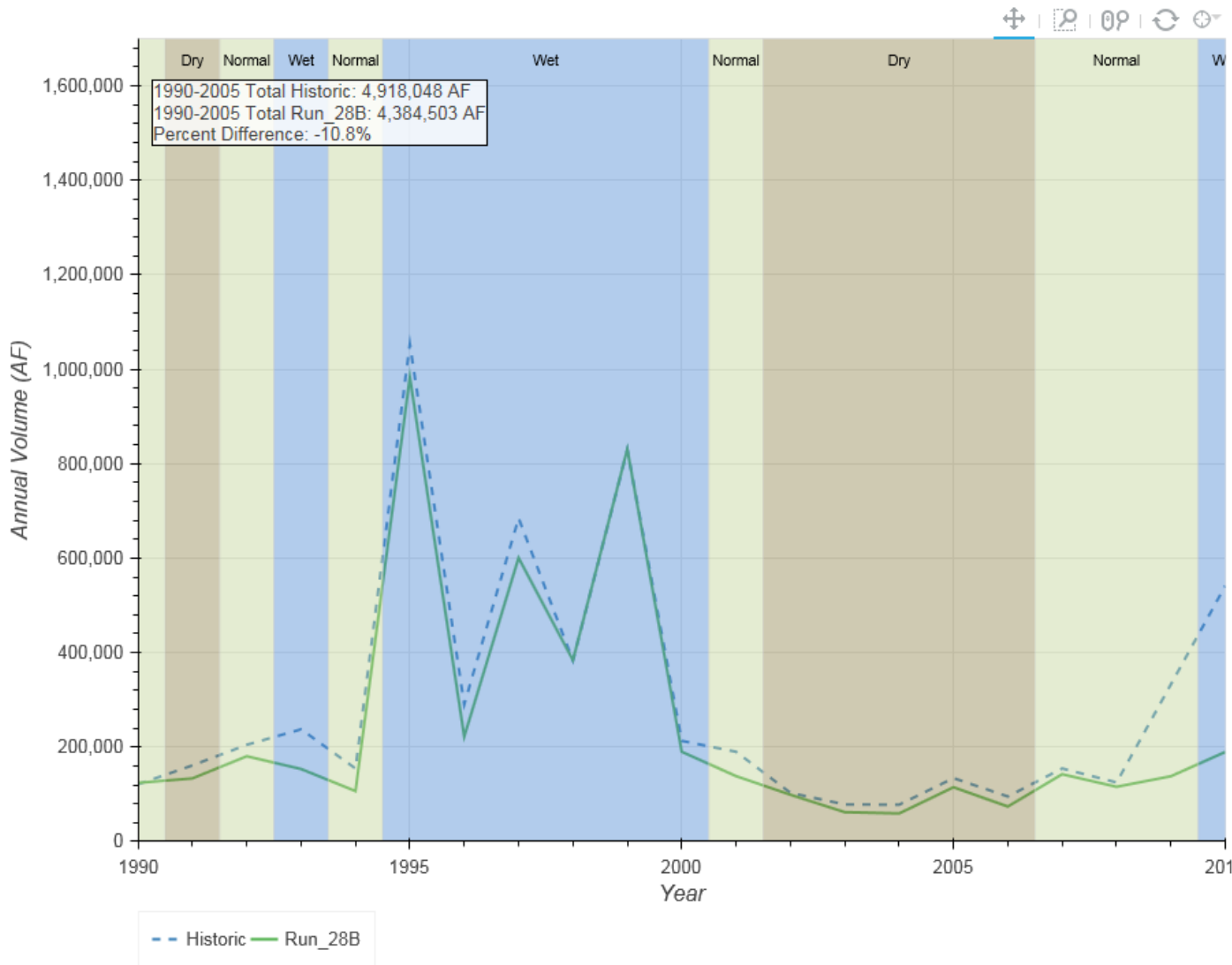


Year	Historic	Run_28B
1990	267,935	265,857
1991	220,670	218,371
1992	383,216	385,256
1993	350,653	340,358
1994	152,441	161,739
1995	1,472,546	1,195,422
1996	435,465	408,623
1997	862,222	835,478
1998	693,611	601,970
1999	1,163,301	1,033,769
2000	340,041	272,378
2001	170,990	173,041
2002	68,087	74,967
2003	22,203	13,581
2004	11,429	11,882
2005	108,272	91,563
2006	32,529	26,036
2007	121,739	122,013
2008	83,471	78,527
2009	396,253	189,699
2010	644,048	247,016
Total	8,001,122	6,747,546

South Platte River at Roscoe

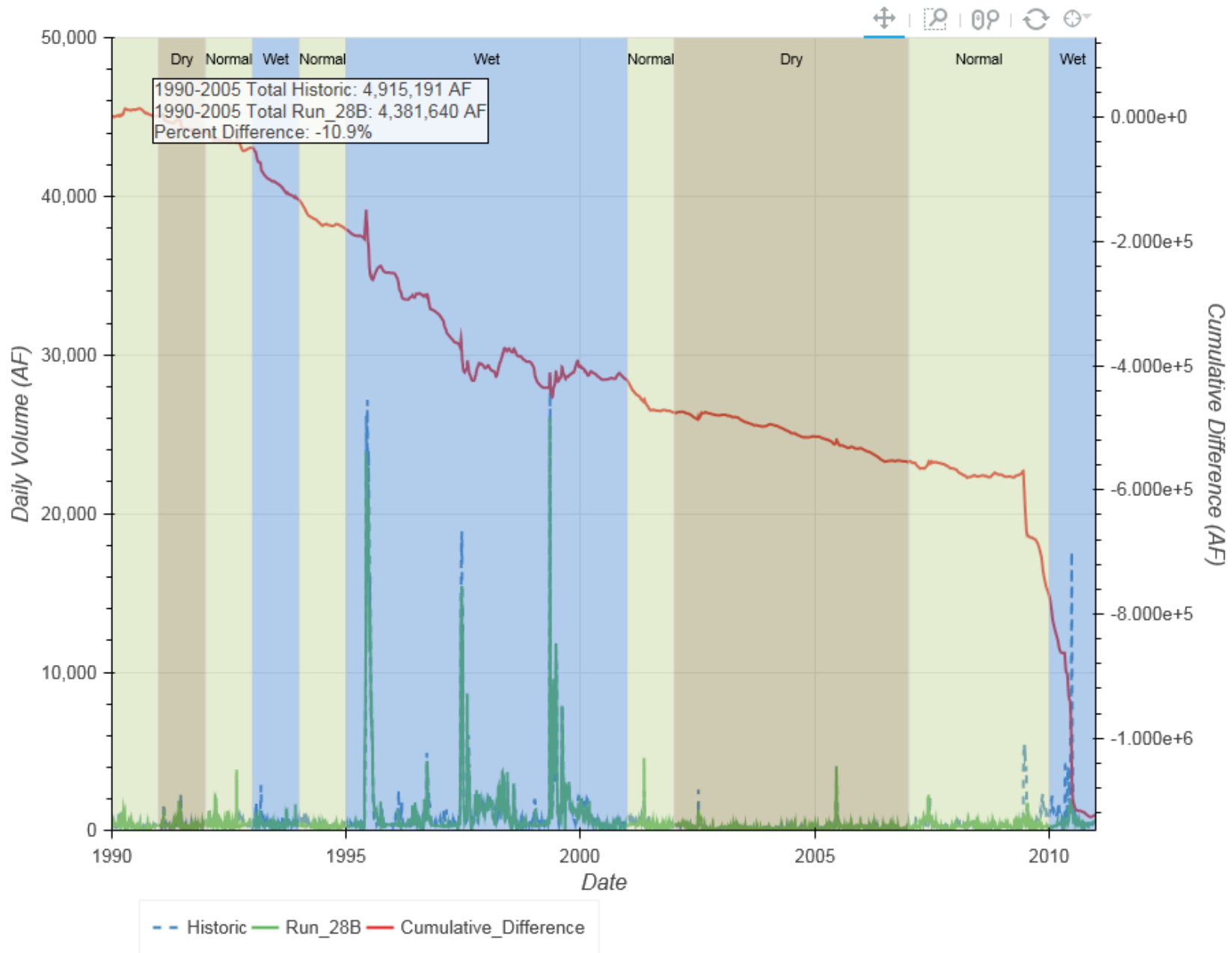


South Platte River at North Platte

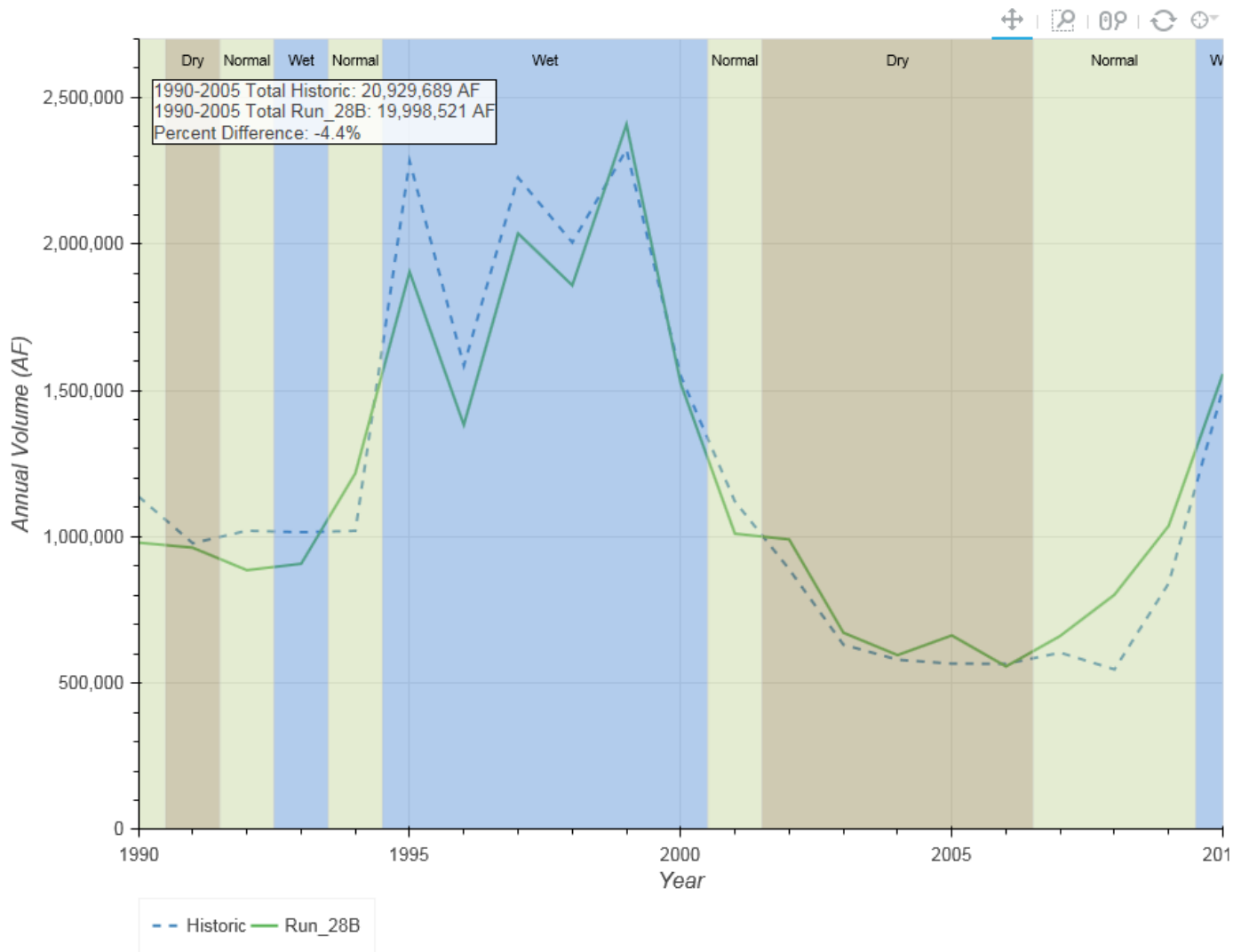


Year	Historic	Run_28B
1990	121,311	124,182
1991	161,180	133,675
1992	204,797	180,615
1993	237,582	153,535
1994	154,607	106,865
1995	1,053,601	983,409
1996	290,344	222,285
1997	684,753	600,723
1998	383,151	383,735
1999	829,626	831,007
2000	213,139	190,217
2001	190,089	138,538
2002	103,160	99,098
2003	78,494	62,140
2004	77,924	59,484
2005	134,290	114,995
2006	95,343	74,084
2007	154,738	142,549
2008	125,075	115,860
2009	332,903	138,271
2010	541,445	189,718
Total	6,167,552	5,044,985

South Platte River at North Platte

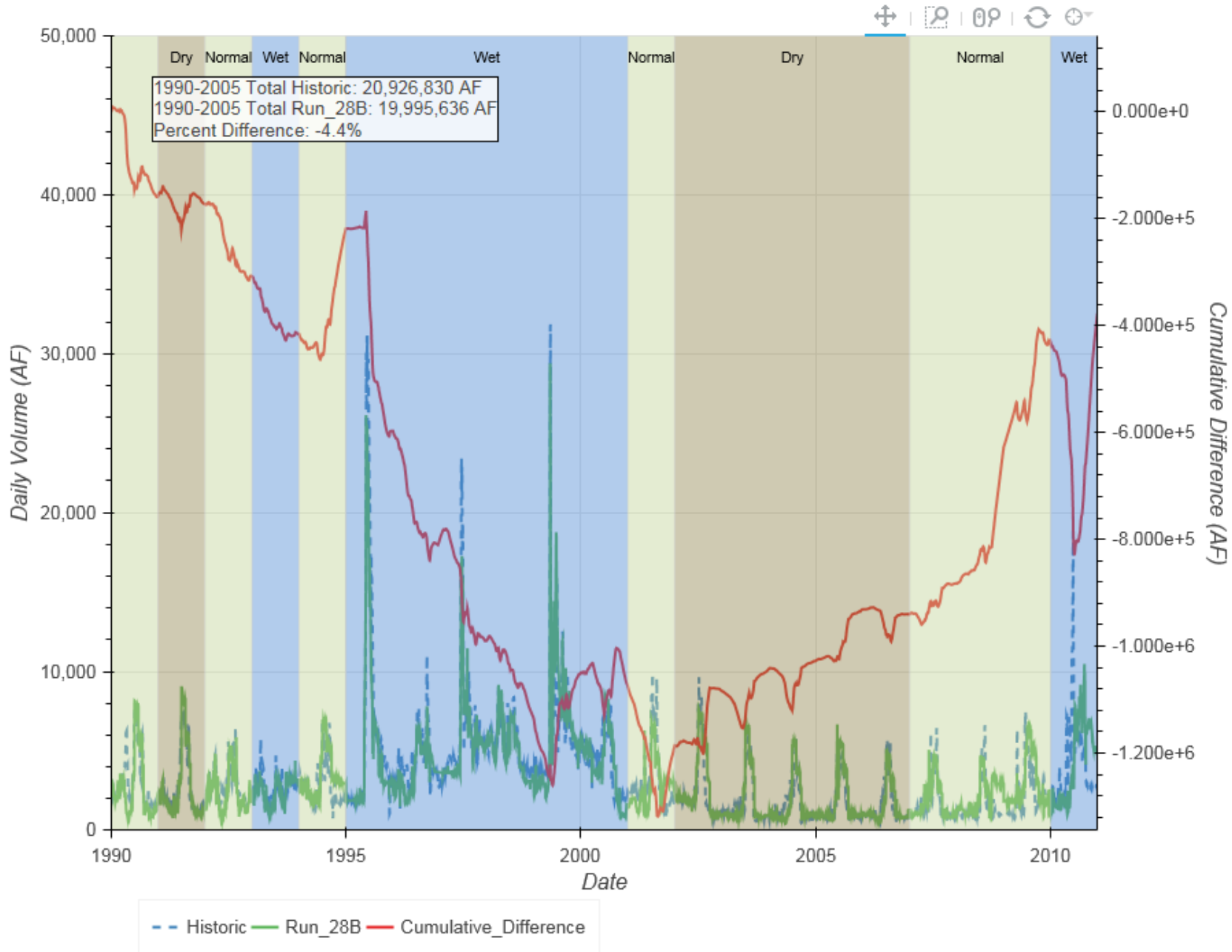


Platte River at North Platte

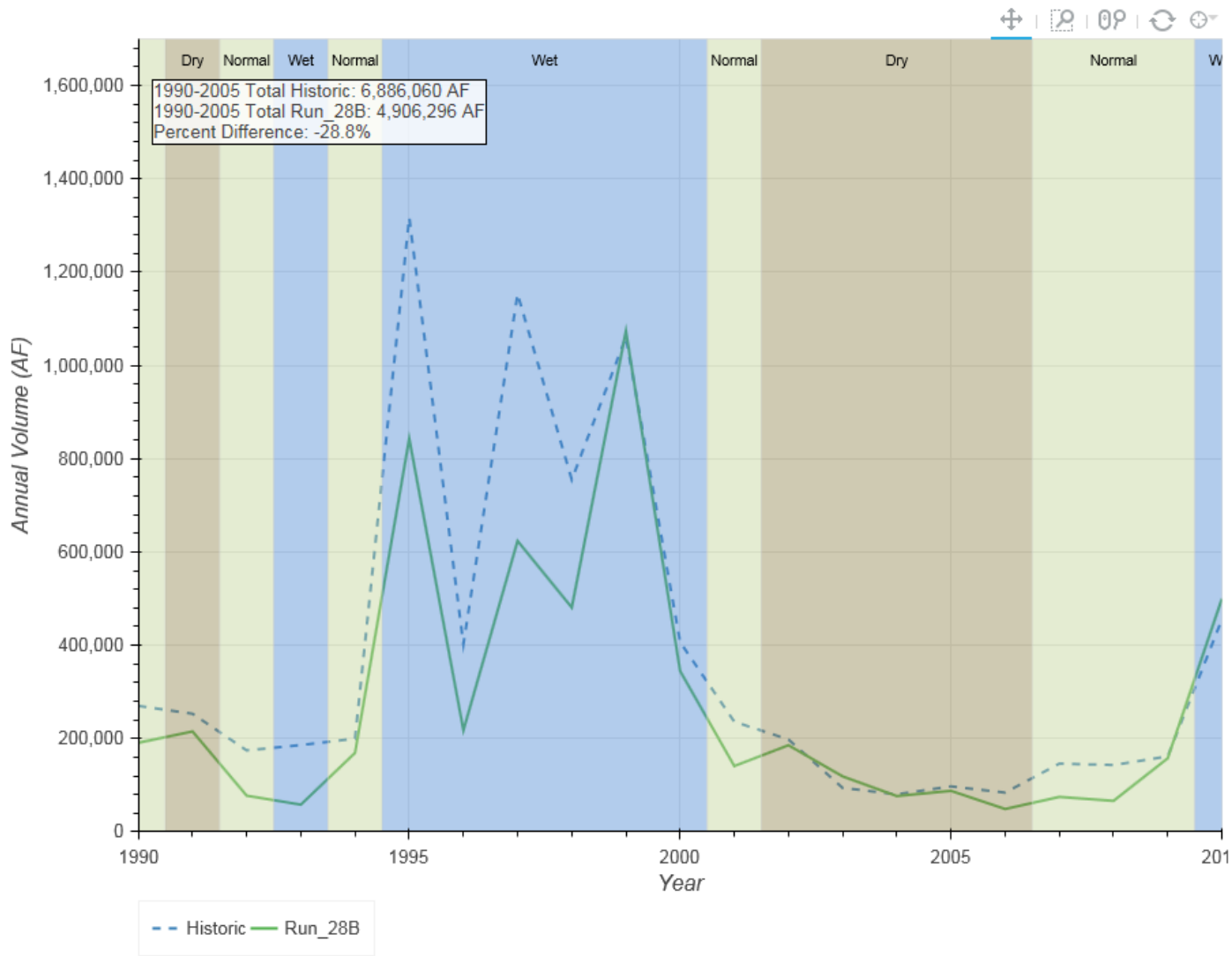


Year	Historic	Run_28B
1990	1,137,504	980,005
1991	977,775	962,572
1992	1,020,743	885,721
1993	1,015,275	907,791
1994	1,020,232	1,216,892
1995	2,283,086	1,904,482
1996	1,584,065	1,382,236
1997	2,226,666	2,035,919
1998	2,005,219	1,858,652
1999	2,322,271	2,408,438
2000	1,549,183	1,523,591
2001	1,120,462	1,010,341
2002	889,033	990,869
2003	631,499	672,394
2004	580,080	595,635
2005	566,596	662,983
2006	565,693	556,992
2007	604,054	661,361
2008	546,898	801,995
2009	840,967	1,037,365
2010	1,504,724	1,556,333
Total	24,992,025	24,612,567

Platte River at North Platte

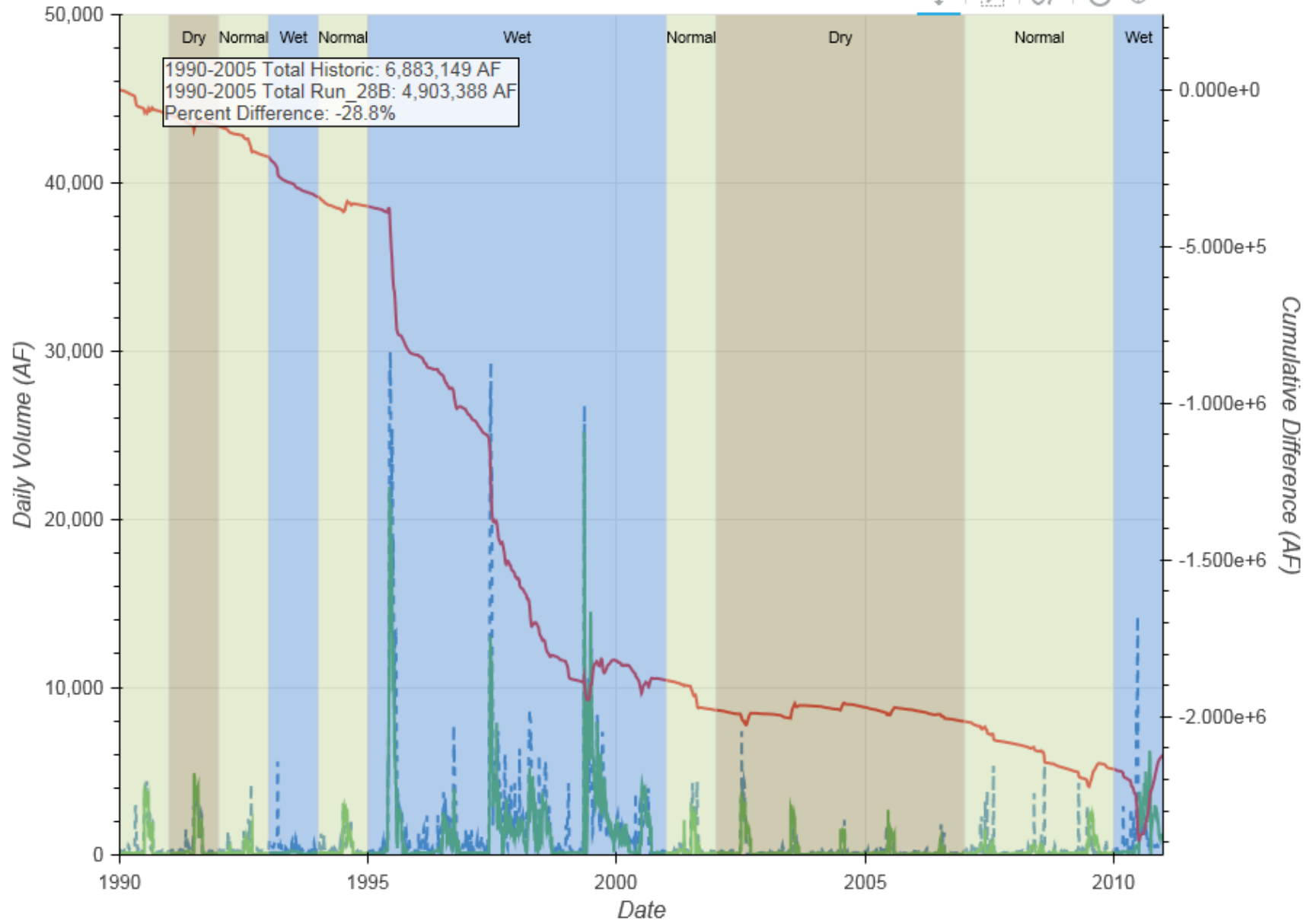


Platte River at Brady



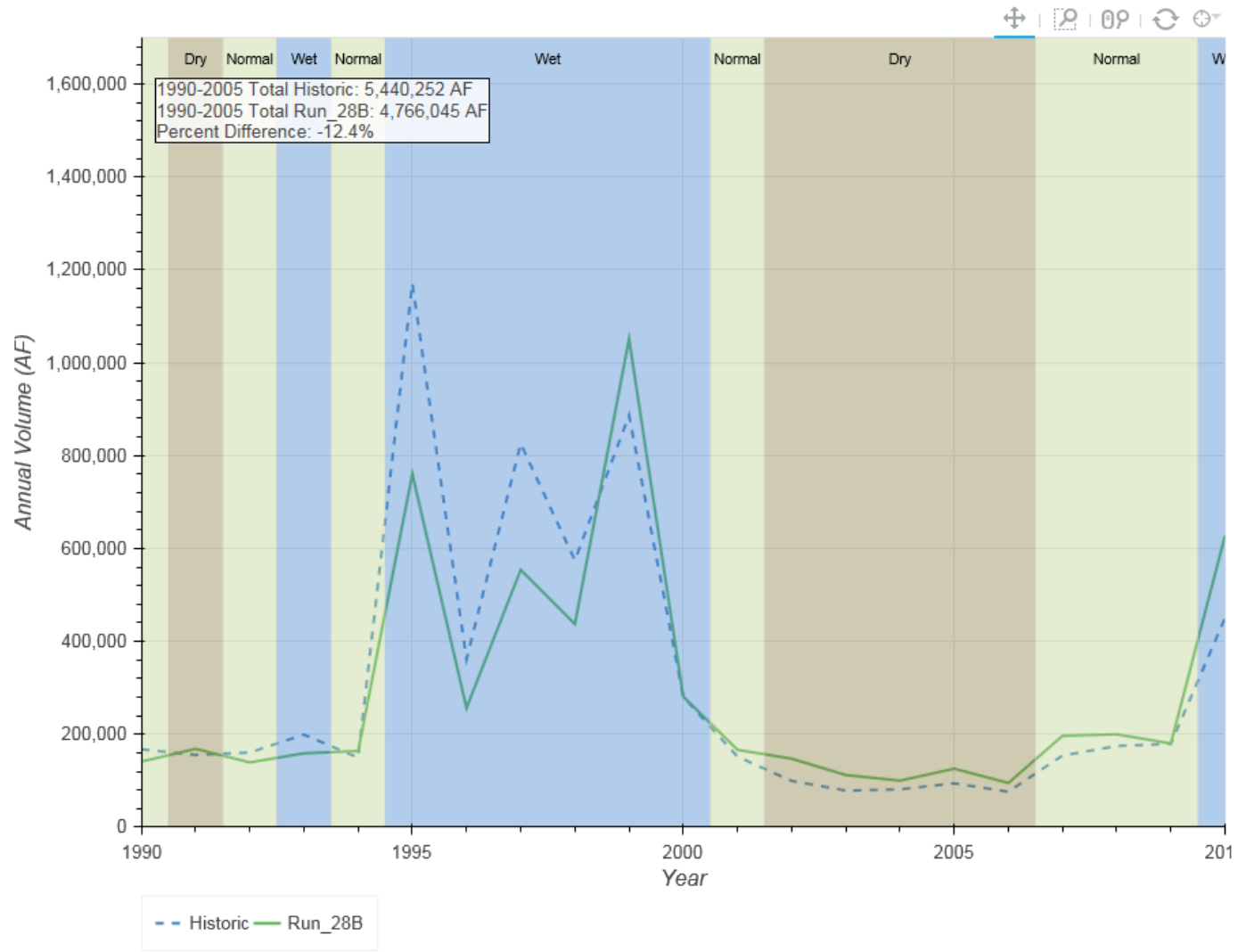
Year	Historic	Run_28B
1990	270,083	190,996
1991	253,249	215,242
1992	174,605	77,595
1993	186,047	58,329
1994	199,834	169,476
1995	1,317,284	843,292
1996	402,434	217,788
1997	1,153,340	623,721
1998	755,095	481,033
1999	1,060,696	1,073,684
2000	406,849	344,809
2001	236,163	141,024
2002	198,124	185,750
2003	94,202	118,923
2004	80,556	76,699
2005	97,499	87,935
2006	84,148	48,975
2007	146,306	74,898
2008	143,192	66,463
2009	161,769	157,656
2010	455,321	499,673
Total	7,876,796	5,753,961

Platte River at Brady



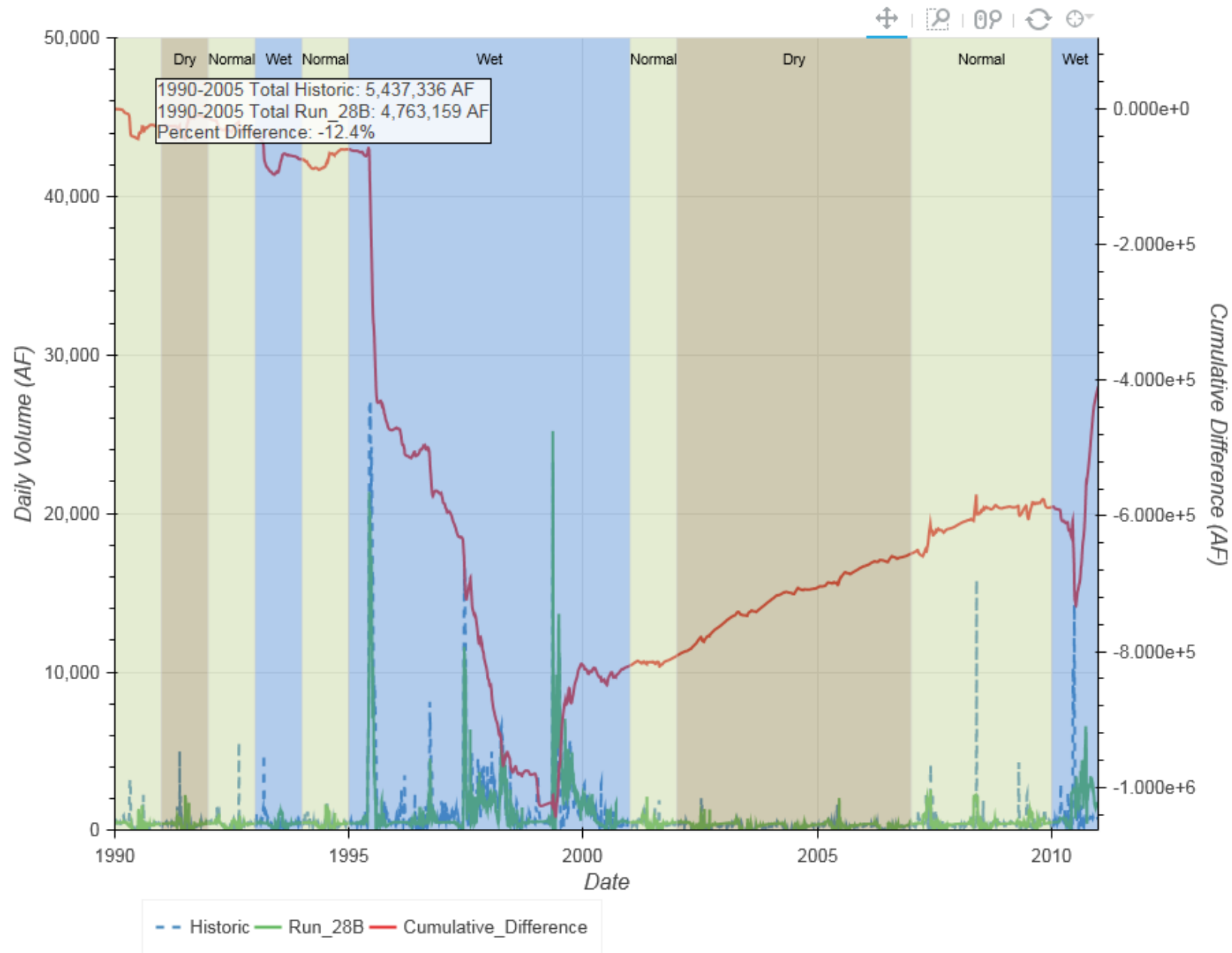
- - Historic Run_28B Cumulative_Difference

Platte River at Cozad

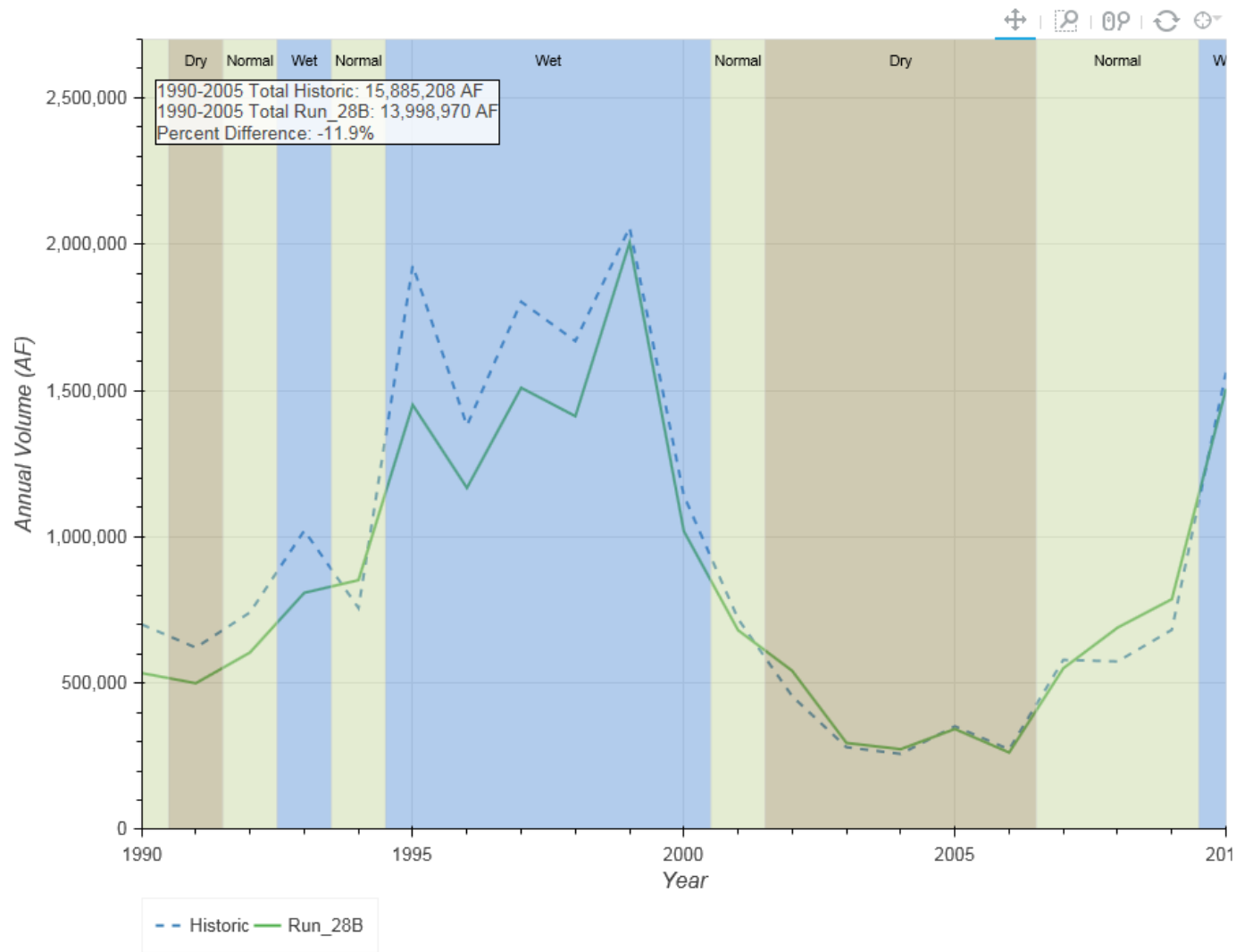


Year	Historic	Run_28B
1990	167,640	141,246
1991	155,609	168,728
1992	160,903	139,579
1993	199,259	159,082
1994	149,775	164,063
1995	1,170,888	760,534
1996	361,608	256,457
1997	825,790	554,139
1998	574,665	437,248
1999	886,756	1,051,329
2000	281,115	281,153
2001	151,937	166,620
2002	99,624	147,480
2003	78,812	112,268
2004	81,502	100,154
2005	94,369	125,965
2006	76,439	95,102
2007	154,284	196,724
2008	174,593	199,917
2009	179,660	180,269
2010	450,831	627,893
Total	6,476,059	6,065,950

Platte River at Cozad

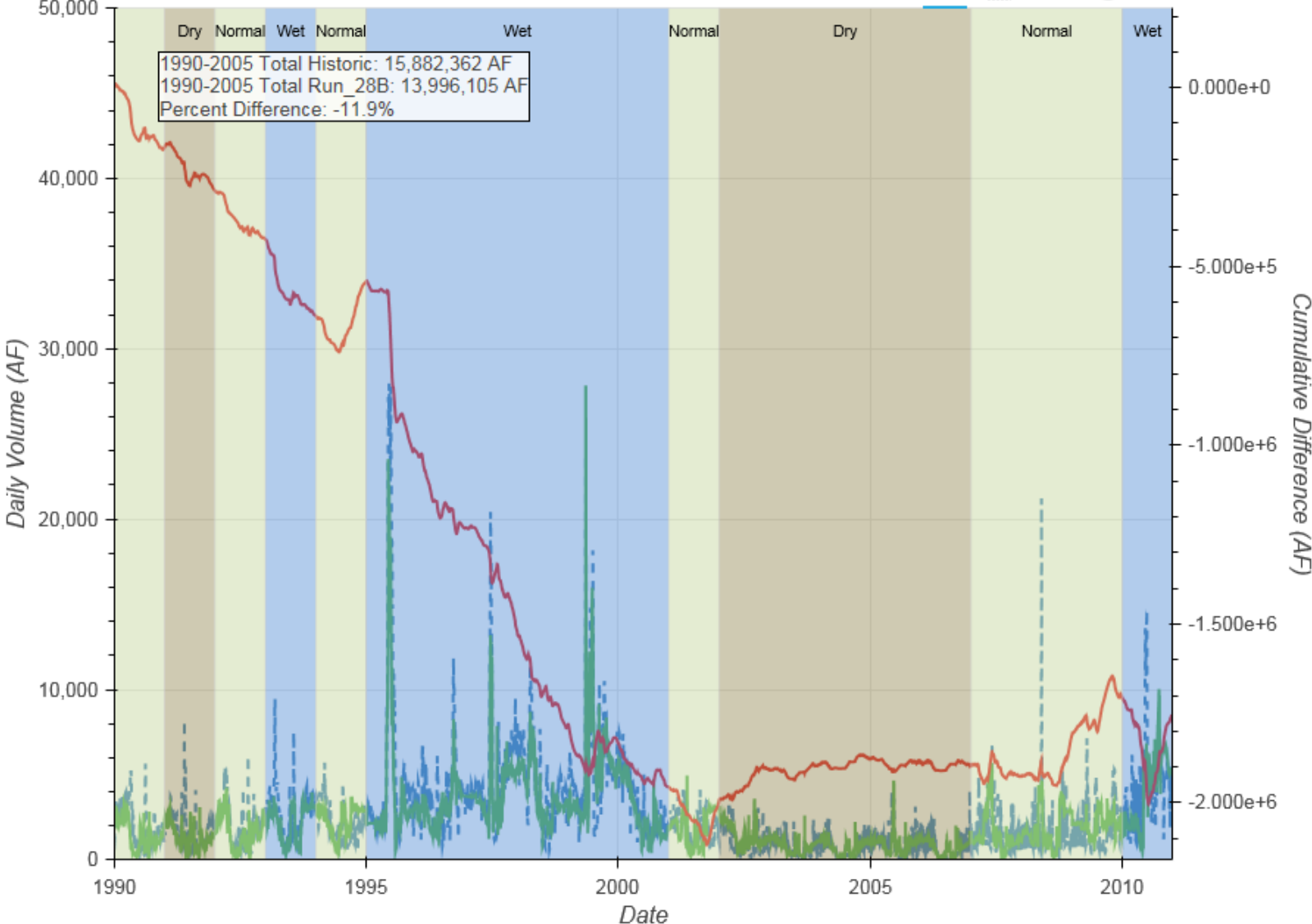


Platte River near Overton



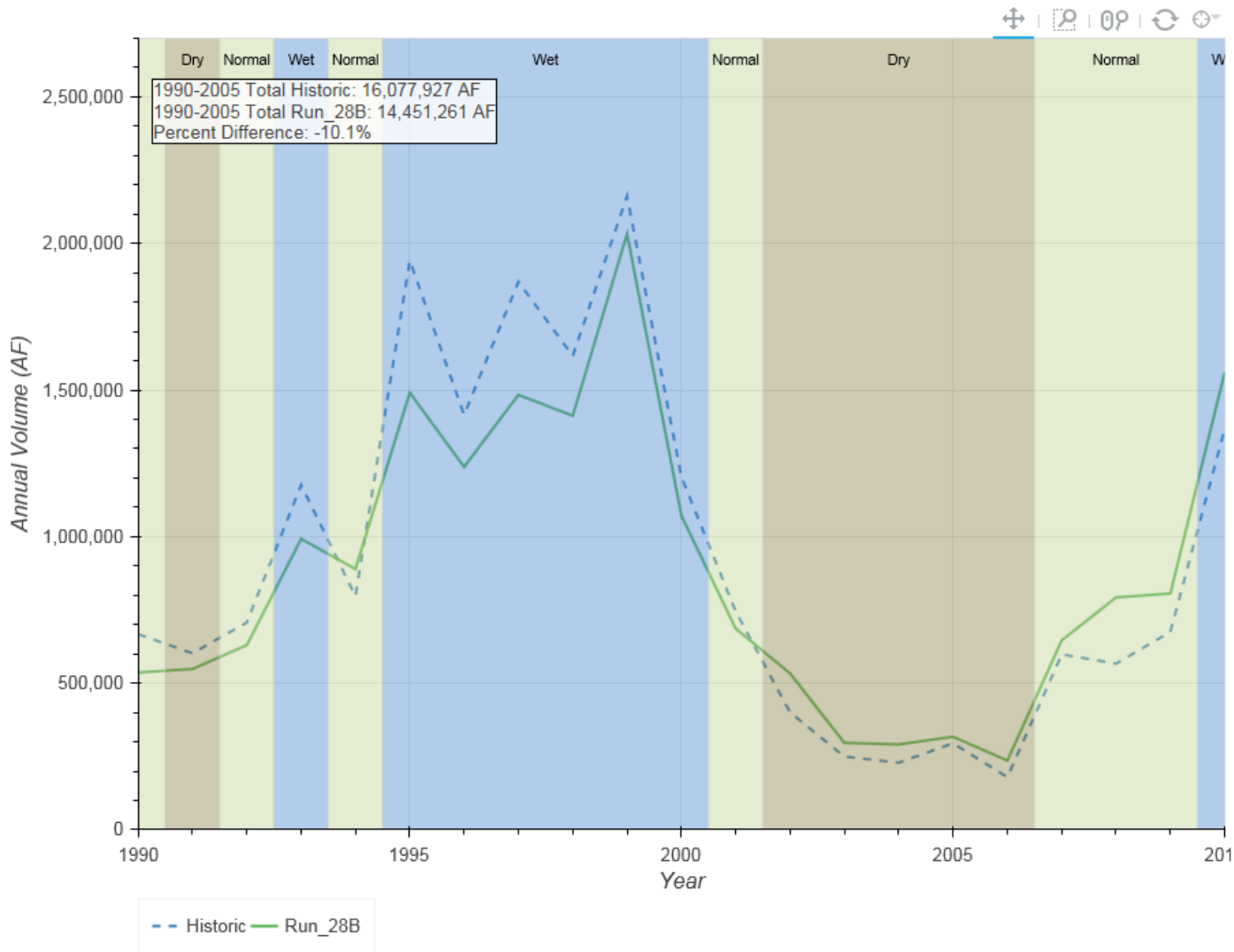
Year	Historic	Run_28B
1990	700,627	534,453
1991	621,294	499,536
1992	741,734	604,857
1993	1,021,094	808,455
1994	756,628	851,969
1995	1,927,021	1,450,714
1996	1,380,382	1,166,939
1997	1,803,308	1,509,242
1998	1,668,902	1,412,147
1999	2,057,093	2,005,443
2000	1,141,077	1,019,669
2001	719,633	680,848
2002	454,948	541,805
2003	280,956	295,448
2004	258,059	274,278
2005	352,452	343,167
2006	273,459	262,638
2007	579,340	550,675
2008	574,129	689,431
2009	681,929	786,701
2010	1,561,636	1,505,792
Total	19,555,701	17,794,207

Platte River near Overton



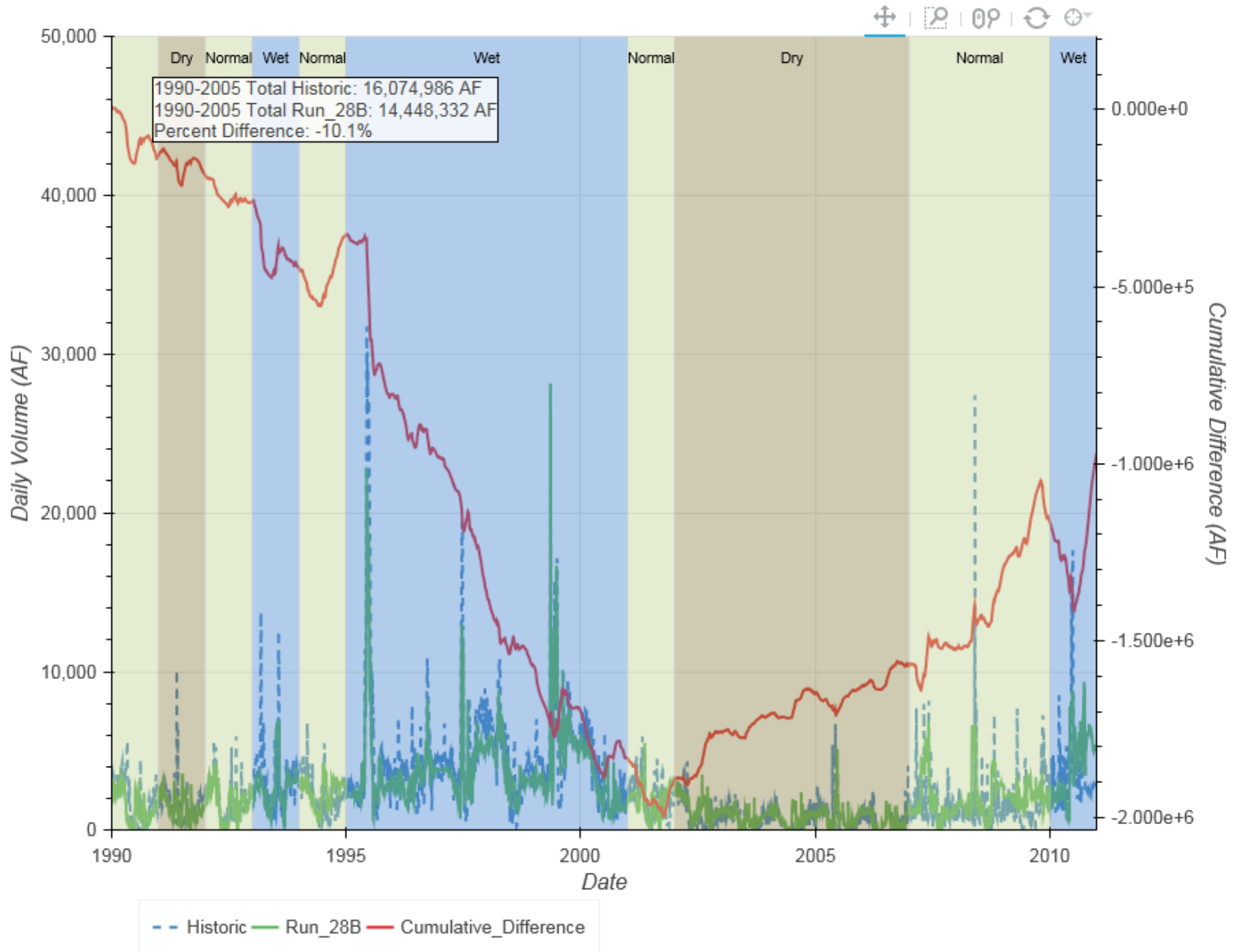
-- Historic — Run_28B — Cumulative_Difference

Platte River near Odessa

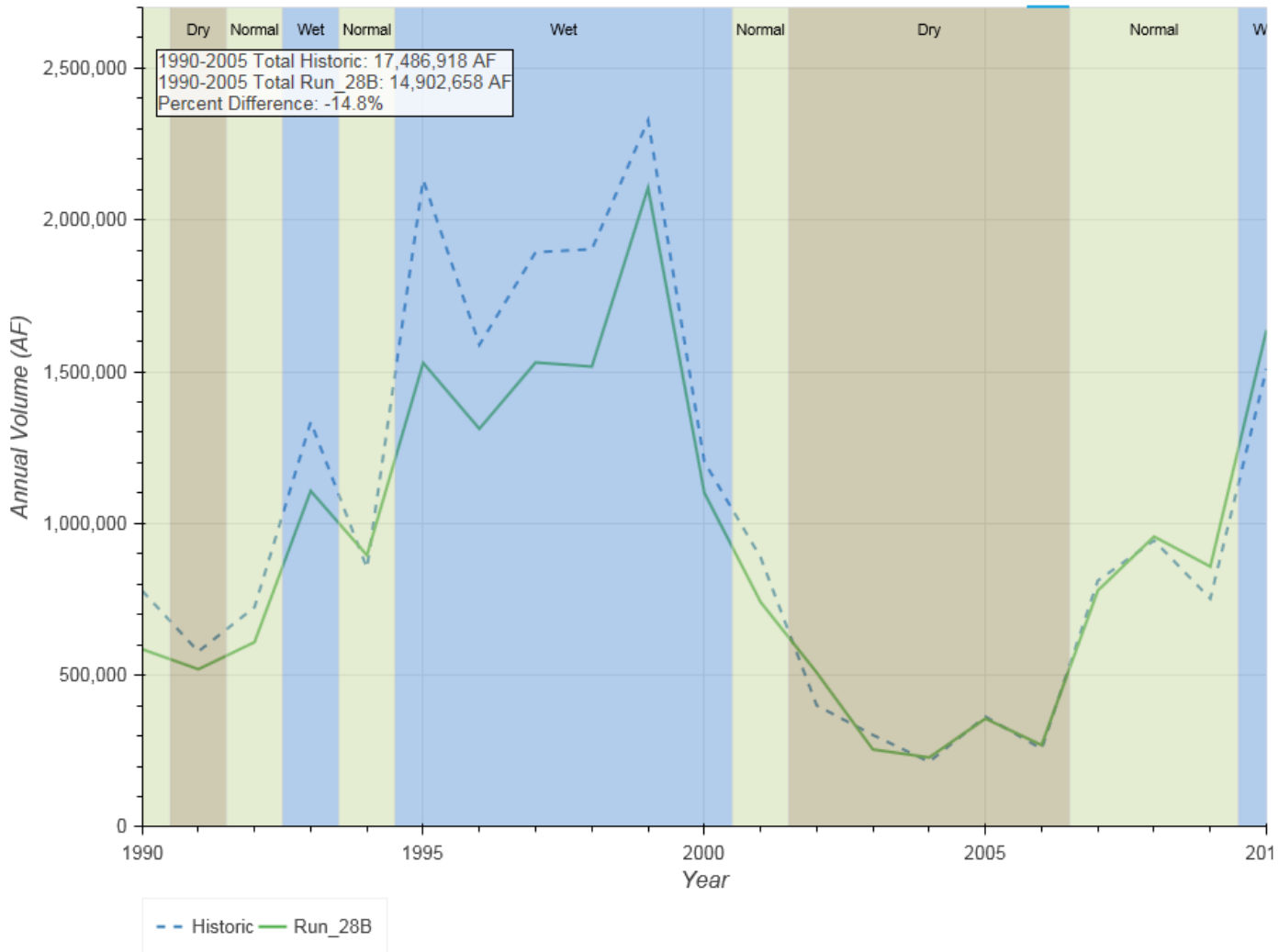


Year	Historic	Run_28B
1990	667,445	536,527
1991	602,142	548,427
1992	707,045	629,850
1993	1,176,478	992,290
1994	797,077	889,553
1995	1,941,738	1,491,253
1996	1,415,587	1,237,874
1997	1,869,606	1,483,626
1998	1,616,536	1,412,475
1999	2,161,582	2,033,364
2000	1,203,935	1,071,304
2001	744,725	686,062
2002	400,514	533,431
2003	249,635	296,666
2004	228,926	291,098
2005	294,956	317,461
2006	179,549	235,988
2007	598,343	645,917
2008	566,745	792,692
2009	674,802	805,897
2010	1,366,224	1,560,448
Total	19,463,590	18,492,203

Platte River near Odessa

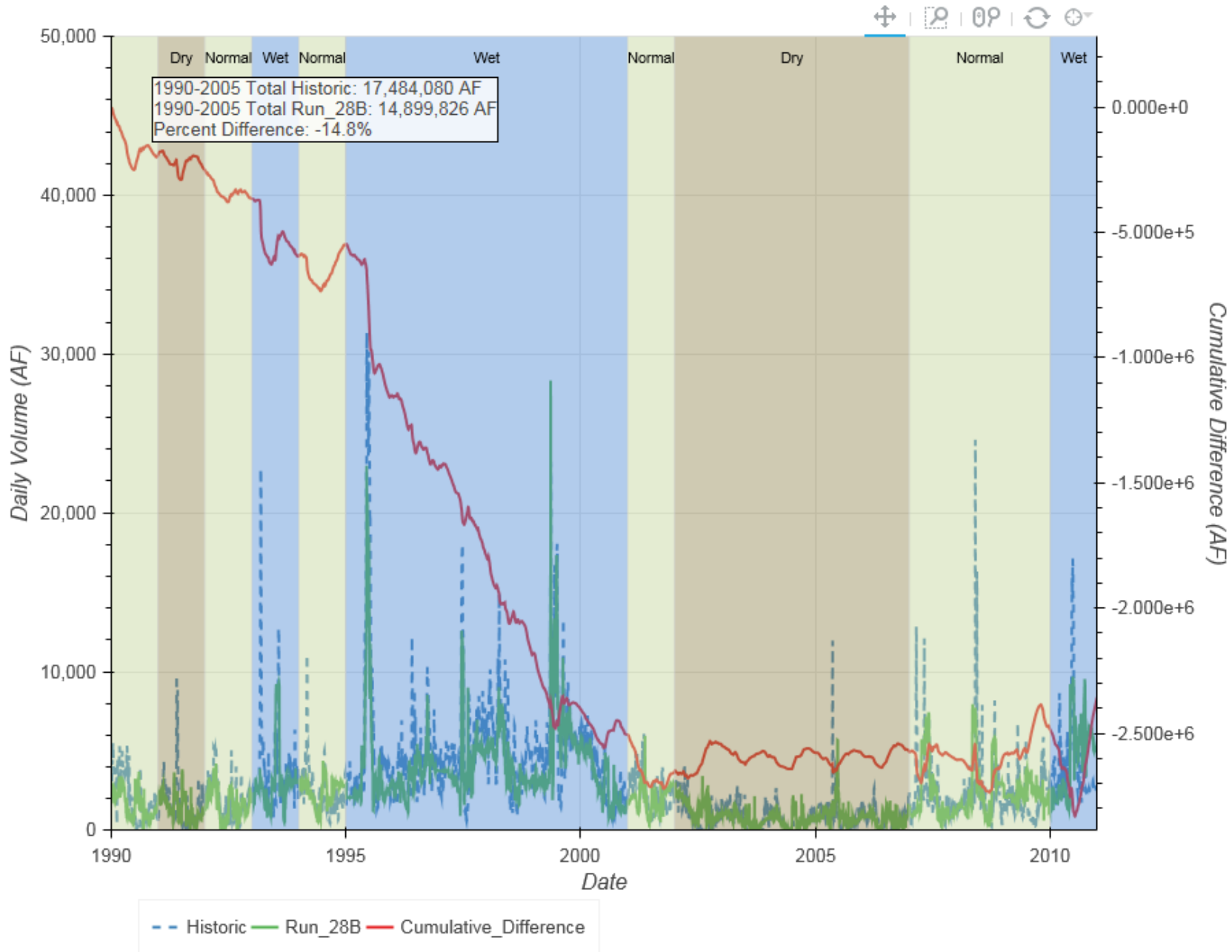


Platte River near Grand Island

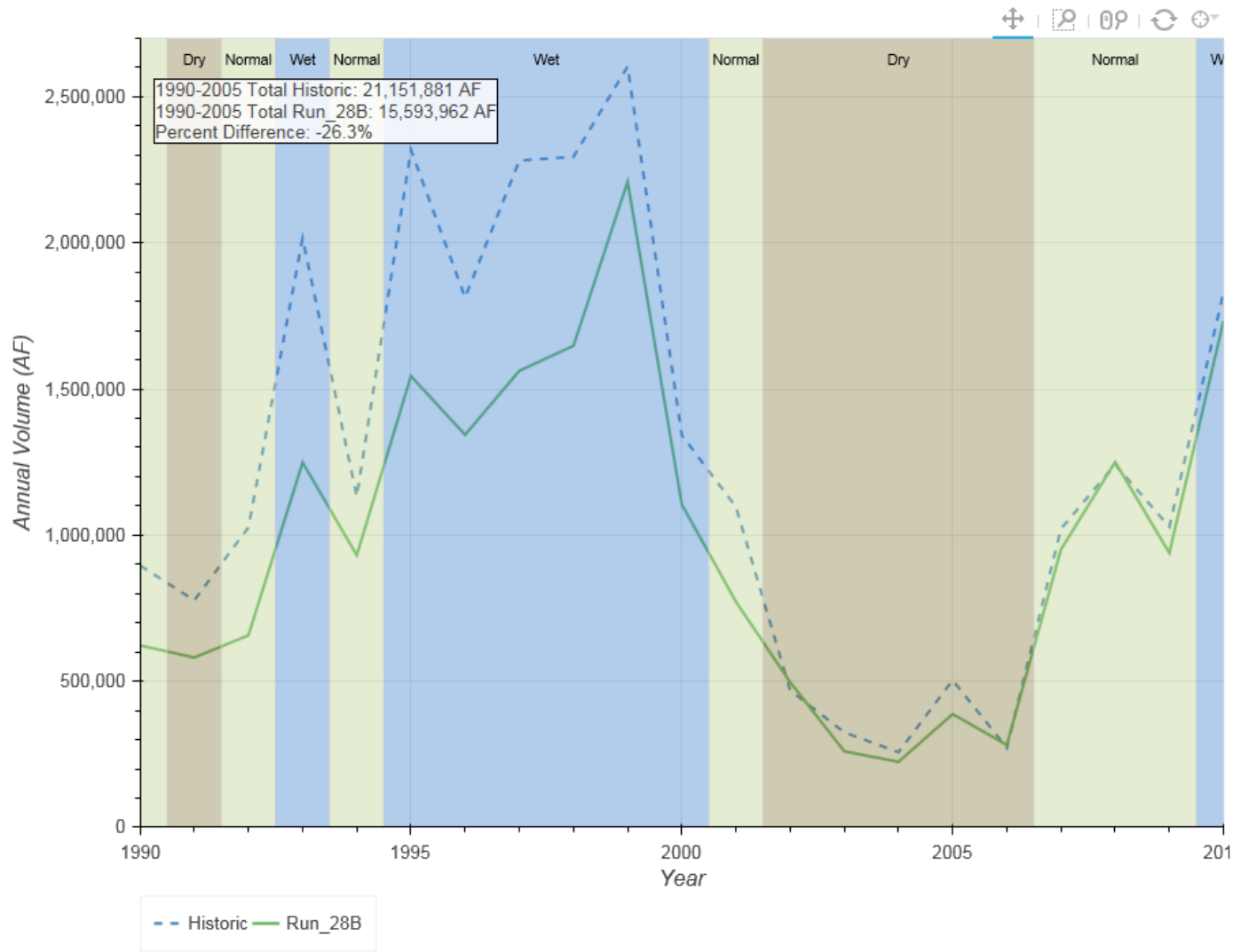


Year	Historic	Run_28B
1990	778,458	585,732
1991	577,996	519,615
1992	723,935	608,916
1993	1,334,415	1,107,083
1994	853,154	895,003
1995	2,132,257	1,528,849
1996	1,588,520	1,311,813
1997	1,893,909	1,530,393
1998	1,903,442	1,516,807
1999	2,327,940	2,106,023
2000	1,203,135	1,101,132
2001	888,410	741,330
2002	400,261	508,537
2003	302,989	255,262
2004	214,682	229,082
2005	363,415	357,081
2006	257,342	269,600
2007	811,390	779,026
2008	944,066	956,944
2009	752,027	857,717
2010	1,509,919	1,637,057
Total	21,761,662	19,403,002

Platte River near Grand Island



Platte River near Duncan



Year	Historic	Run_28B
1990	896,040	622,702
1991	776,920	581,133
1992	1,026,614	657,193
1993	2,015,676	1,248,701
1994	1,132,088	931,105
1995	2,318,108	1,544,242
1996	1,813,170	1,343,328
1997	2,281,898	1,562,101
1998	2,294,396	1,648,015
1999	2,603,722	2,209,490
2000	1,342,044	1,104,961
2001	1,096,421	772,044
2002	469,058	496,900
2003	324,941	260,166
2004	257,187	224,062
2005	503,598	387,819
2006	272,373	282,060
2007	1,021,701	951,203
2008	1,241,399	1,249,972
2009	1,028,435	939,176
2010	1,830,319	1,732,419
Total	26,546,108	20,748,792

Platte River near Duncan

