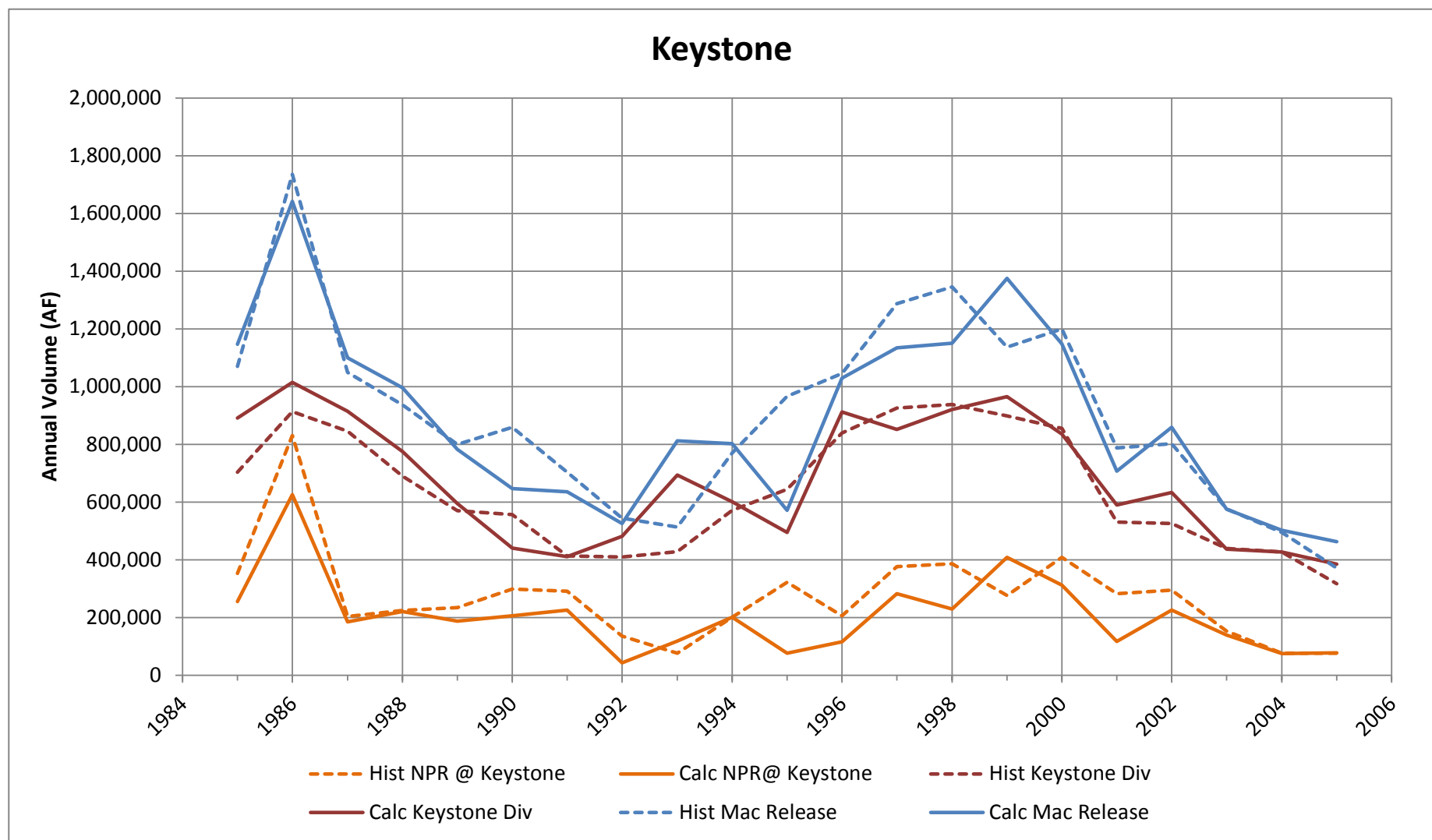


Surface Water Model Calibration Results – Reach Scale Water Budgets

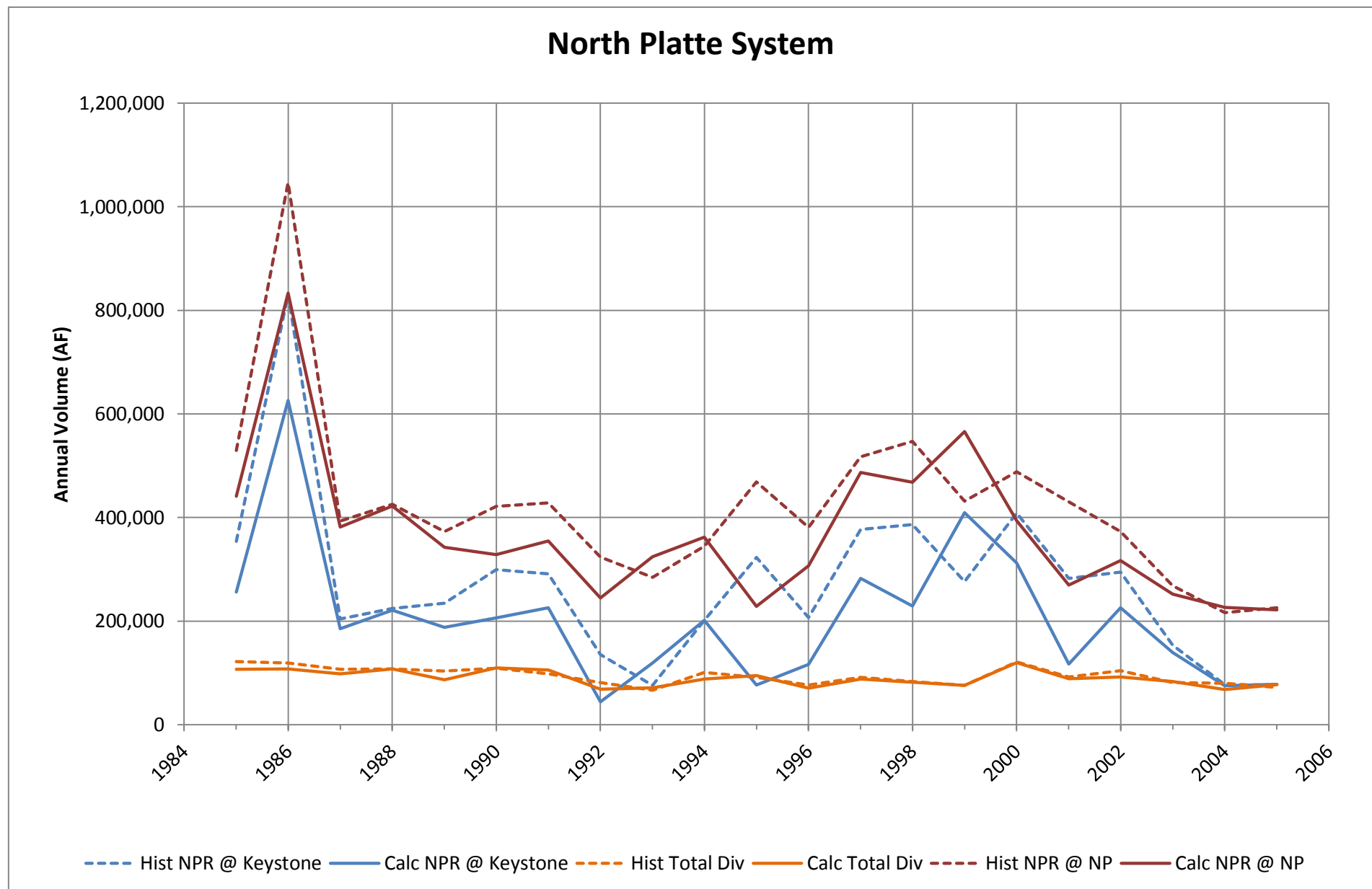
Appendix 6-K includes annual tabular data and plots of historic and calculated water budgets terms for selected reaches/junctions for evaluating model performance and inform the overall model calibration. The reaches/junctions include Keystone Analysis Point, North Platte River System, Sutherland System, CNPPID System, and the Platte River at North Platte. The water budgets terms consider inflows and outflows, reach gain loss, change in reservoir storage, and surface water loss to the system.

Keystone Analysis Point Water Budget						
Year	Historic Volume (AF)			Calculated Volume (AF)		
	Lake Mac Release	Keystone Div	NPR @ Keystone	Lake Mac Release	Keystone Div	NPR @ Keystone
1985	1,070,079	703,841	353,749	1,147,487	891,514	255,973
1986	1,736,025	913,283	830,323	1,641,302	1,015,421	625,880
1987	1,049,937	846,109	204,124	1,100,173	915,023	185,150
1988	937,250	689,942	224,430	996,075	775,301	220,774
1989	800,406	570,462	234,187	782,951	595,170	187,780
1990	859,331	557,046	299,107	646,980	440,854	206,125
1991	704,356	413,726	291,368	636,496	410,994	225,502
1992	545,093	410,580	135,533	525,721	481,716	44,005
1993	513,606	428,537	76,217	812,738	693,492	119,245
1994	769,886	572,279	201,606	802,595	600,878	201,716
1995	966,647	644,727	322,603	571,307	494,959	76,348
1996	1,045,833	839,111	206,640	1,029,240	912,676	116,565
1997	1,287,648	926,045	376,745	1,134,675	852,268	282,407
1998	1,346,229	938,771	386,615	1,150,059	920,705	229,354
1999	1,136,956	898,766	276,422	1,375,079	965,886	409,193
2000	1,199,776	855,219	408,632	1,148,074	835,931	312,143
2001	788,215	531,576	282,680	707,585	590,612	116,973
2002	802,329	525,842	294,771	859,574	634,030	225,544
2003	576,730	439,571	153,688	575,970	436,854	139,116
2004	495,455	427,043	77,013	502,748	427,319	75,428
2005	371,723	317,851	76,319	462,719	384,794	77,926
Grand Total	19,003,509	13,450,330	5,712,771	18,609,549	14,276,395	4,333,146
			Diff (Calc-Hist)	-393,959	826,066	-1,379,626

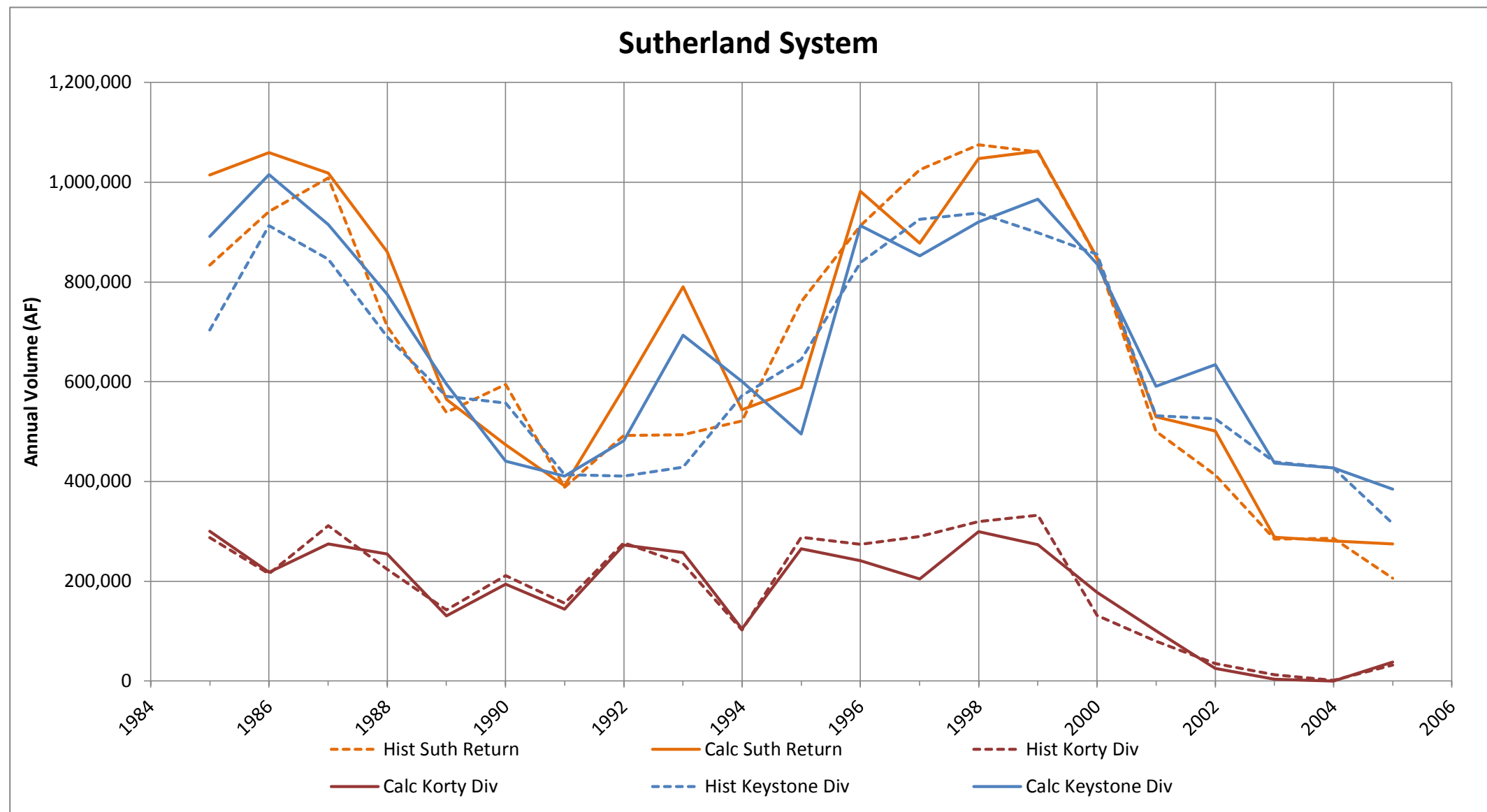


North Platte River System Water Budget									
Year	Historic Volume (AF)				Calculated Volume (AF)				
	NPR @ Keystone	Total Canal Div	NPR @ NP	Calc RGL	NPR @ Keystone	Total Canal Div	Total Canal Rtn*	NPR @ NP	Calc RGL
1985	353,749	121,987	529,210	297,447	255,973	107,015	0	440,750	291,792
1986	830,323	119,066	1,046,632	335,375	625,880	107,867	0	832,995	314,981
1987	204,124	106,650	393,205	295,731	185,150	98,501	0	381,973	295,325
1988	224,430	107,668	425,796	309,034	220,774	107,307	0	421,948	308,481
1989	234,187	103,357	372,573	241,743	187,780	86,995	0	342,424	241,639
1990	299,107	108,672	421,202	230,767	206,125	109,626	0	328,345	231,846
1991	291,368	98,160	428,307	235,098	225,502	105,923	0	354,424	234,846
1992	135,533	81,055	323,796	269,318	44,005	68,314	0	244,524	268,833
1993	76,217	66,328	284,215	274,327	119,245	71,489	0	324,556	276,800
1994	201,606	100,666	344,438	243,497	201,716	88,059	0	361,956	248,299
1995	322,603	91,110	468,795	237,303	76,348	94,942	0	228,174	246,768
1996	206,640	76,258	380,997	250,615	116,565	70,290	0	306,633	260,358
1997	376,709	91,488	517,075	231,854	282,407	87,938	0	487,201	292,732
1998	386,615	83,288	546,770	243,443	229,354	81,776	0	467,807	320,229
1999	276,422	76,161	431,744	231,484	409,193	76,085	0	565,621	232,513
2000	408,632	121,220	488,634	201,222	312,143	119,499	0	394,071	201,427
2001	282,682	91,814	430,007	239,139	116,973	88,910	0	269,389	241,326
2002	294,763	104,557	372,895	182,689	225,544	92,229	0	316,992	183,678
2003	153,688	81,427	268,532	196,271	139,116	83,212	0	252,014	196,110
2004	77,013	80,209	216,046	219,242	75,428	67,693	0	226,574	218,838
2005	76,319	71,552	225,919	221,153	77,926	77,456	0	221,363	220,894
Grand Total	5,712,730	1,982,693	8,916,787	5,186,750	4,333,146	1,891,126	0	7,769,733	5,327,714
				Diff (Calc-Hist)	-1,379,584	-91,567		-1,147,054	-140,963

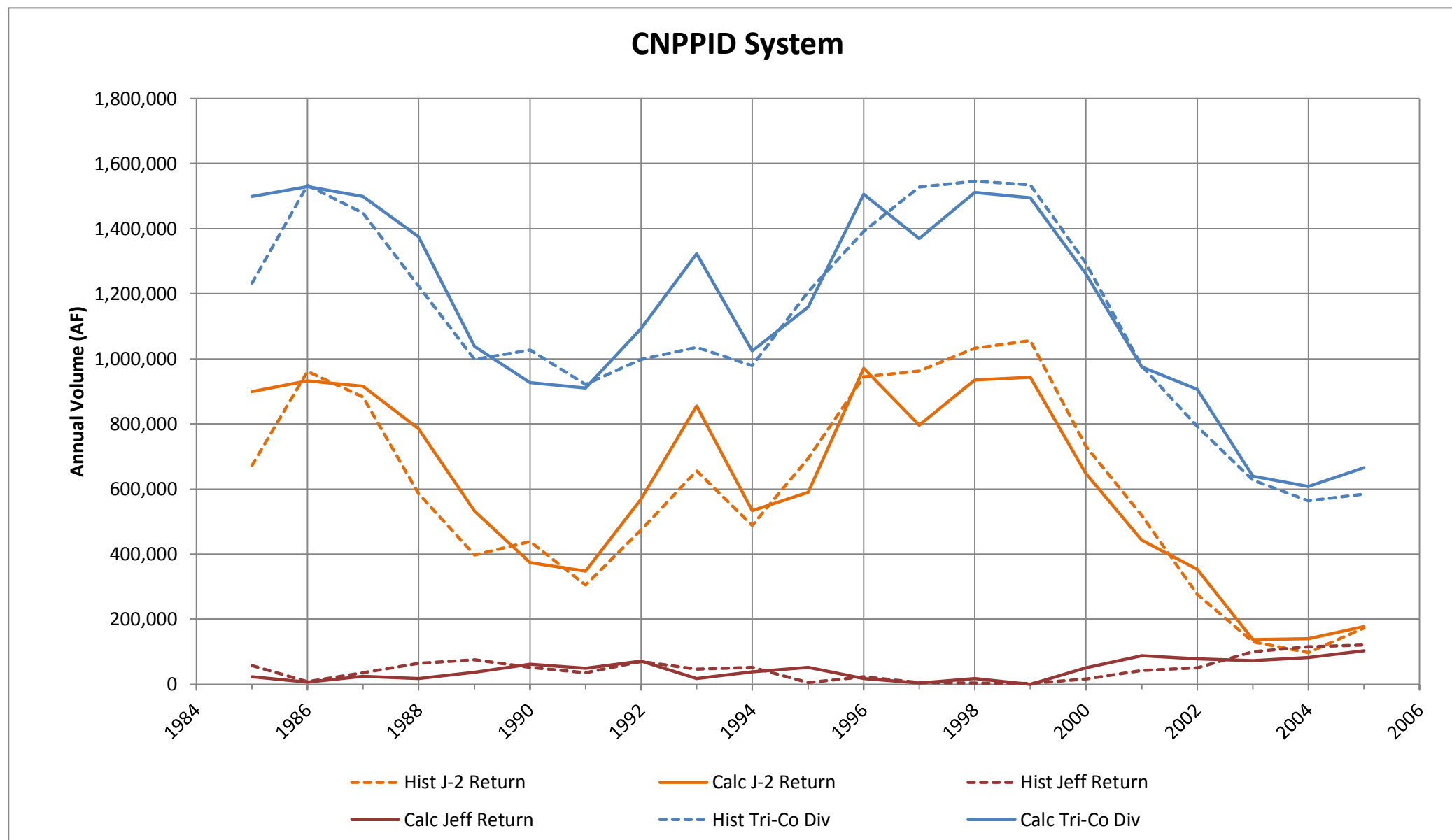
*This was a SW only calibration run using historic RGL so the returns are included in the RGL and therefore not explicitly included in the computation.



Sutherland System Water Budget										
Year	Historic Volume (AF)					Calculated Volume (AF)				
	Keystone	Korty	Suth. Return	Delta Storage	Calc. SW Loss	Keystone	Korty	Suth. Return	Delta Storage	Calc. SW Loss
1985	703,841	287,657	833,435	-4,596	162,659	891,514	300,571	1,014,590	-5,242	182,737
1986	913,283	214,820	941,256	-5,130	191,977	1,015,421	217,719	1,059,687	0	173,453
1987	846,089	311,401	1,008,674	10,972	137,844	915,023	275,025	1,018,237	793	171,017
1988	689,942	224,110	711,263	-6,842	209,632	775,301	254,287	860,338	-572	169,822
1989	570,462	142,247	538,235	3,970	170,504	595,170	130,686	565,037	1,970	158,850
1990	557,046	211,309	594,992	6,980	166,383	440,854	193,869	473,485	303	160,934
1991	413,730	155,992	388,304	-8,136	189,554	410,994	143,805	391,459	-301	163,640
1992	410,580	277,408	492,151	-5,192	201,030	481,716	272,773	586,984	-1,709	169,214
1993	428,537	234,918	493,478	7,370	162,608	693,492	257,764	790,310	16	160,931
1994	572,279	102,319	521,187	1,731	151,681	600,878	104,750	543,551	1,928	160,149
1995	644,747	288,248	760,689	-1,324	173,630	494,959	264,838	588,942	-1,970	172,825
1996	839,111	274,122	912,724	320	200,189	912,676	241,174	981,820	0	172,029
1997	926,025	289,690	1,024,762	6,226	184,727	852,268	204,741	878,137	0	178,872
1998	938,771	319,307	1,075,299	-5,221	188,000	920,705	299,692	1,047,863	1,634	170,900
1999	898,766	332,569	1,060,901	-8,331	178,765	965,886	273,387	1,062,426	-1,667	178,513
2000	855,219	131,704	847,410	4,560	134,954	835,931	177,352	848,692	1,970	162,620
2001	531,582	80,073	500,372	3,505	107,778	590,612	100,909	529,593	-1,970	163,898
2002	525,842	34,570	412,979	1,172	146,261	634,030	25,415	501,240	1,970	156,235
2003	439,571	12,469	284,473	-5,646	173,212	436,854	3,203	288,077	-1,970	153,950
2004	427,043	1,093	286,110	-195	142,222	427,319	0	281,024	0	146,296
2005	316,258	32,118	206,346	9,155	132,874	384,794	38,153	274,664	0	148,283
Grand Total	13,448,726	3,958,144	13,895,039	5,348	3,506,483	14,276,395	3,780,114	14,586,156	-4,815	3,475,168
					Diff (Calc-Hist)	827,669	-178,030	691,117	-10,163	-31,315



CNPPID System Water Budget																
Year	Historic Volume (AF)								Calculated Volume (AF)							
	Tri-County	Jeffrey Return	E-65	E-67	Phelps	J-2 Return	Delta Storage	SW Loss	Tri-County	Jeffrey Return	E-65	E-67	Phelps	J-2 Return	Delta Storage	SW Loss
1985	1,232,162	58,237	92,108	11,909	109,071	672,456	2,137	286,245	1,498,853	23,810	94,473	9,651	104,200	899,398	-7,438	374,758
1986	1,532,932	7,563	103,695	12,454	121,800	960,938	-735	327,217	1,528,732	6,307	91,312	10,351	112,002	932,398	1,434	374,929
1987	1,447,902	35,055	96,584	11,044	102,536	883,335	3,780	315,569	1,499,250	24,070	86,349	9,082	99,065	916,319	-877	365,241
1988	1,223,480	64,278	110,577	11,566	139,218	585,039	-3,465	316,268	1,375,109	17,795	99,167	11,645	124,687	784,669	652	336,493
1989	998,168	75,938	105,562	11,659	119,529	397,206	3,061	285,214	1,038,335	36,280	89,149	9,531	103,430	532,440	-1,029	268,533
1990	1,027,420	52,370	110,395	11,558	150,706	438,825	-179	263,745	926,863	61,511	103,771	12,424	123,208	374,501	685	250,763
1991	921,317	35,464	104,892	10,848	160,483	304,941	1,926	302,763	910,418	49,663	112,046	13,610	143,091	348,036	-561	244,533
1992	997,678	70,620	92,106	10,996	124,909	473,834	4,307	220,907	1,092,498	71,158	84,200	8,913	84,521	569,698	-208	274,215
1993	1,035,191	46,600	67,870	4,649	48,123	655,263	-7,151	219,836	1,322,524	17,338	61,630	5,927	67,667	854,844	-216	315,333
1994	979,095	51,993	87,748	14,428	107,966	488,049	8,731	220,180	1,024,294	37,670	83,275	8,815	96,604	533,664	945	263,321
1995	1,206,002	4,701	111,411	13,311	145,527	694,457	2,621	233,974	1,159,534	52,019	96,282	11,106	109,479	590,255	455	299,938
1996	1,391,439	22,733	77,612	10,159	78,847	944,543	-842	258,387	1,505,793	17,659	69,067	6,764	76,038	971,369	-917	365,812
1997	1,527,194	5,300	104,160	14,051	148,451	962,531	-543	293,244	1,369,604	3,711	96,646	11,163	120,029	796,304	798	340,954
1998	1,545,680	4,467	101,605	11,958	102,998	1,032,520	-89	292,221	1,511,136	18,368	84,604	8,834	96,075	935,447	-1,217	369,026
1999	1,534,850	2,828	88,935	10,449	107,379	1,055,685	-3,104	272,677	1,495,298	0	82,319	8,646	94,951	943,700	-67	365,749
2000	1,293,658	16,969	103,558	12,371	129,594	731,697	1,935	297,534	1,261,163	51,304	100,136	11,840	125,913	646,950	776	324,244
2001	977,431	41,942	86,413	10,738	116,559	518,763	382	202,633	975,167	87,377	91,579	10,264	91,123	442,213	96	252,516
2002	792,062	51,060	95,647	9,424	137,465	276,526	2,596	219,344	906,365	78,234	97,930	6,919	120,568	352,802	-5	249,918
2003	626,926	100,655	90,758	6,456	131,683	130,770	-2,049	168,652	638,797	73,018	98,768	7,131	106,741	138,012	64	215,063
2004	563,316	115,373	82,505	5,629	121,156	96,785	310	141,557	607,204	82,705	85,776	5,220	84,214	140,606	1,303	207,380
2005	583,914	120,688	50,597	3,388	77,820	172,584	-1,853	160,691	664,784	102,990	85,021	4,689	81,056	176,558	55	214,414
Grand Total	23,437,814	984,835	1,964,737	219,045	2,481,817	12,476,746	11,776	5,298,858	24,311,720	912,988	1,893,499	192,527	2,164,660	12,880,183	-5,272	6,273,134
								Diff (Calc-Hist)	873,906	-71,847	-71,238	-26,518	-317,157	403,437	-17,048	974,276



North Platte River System Water Budget								
Year	Historic Volume (AF)				Calculated Volume (AF)			
	NPR @ NP	SP @ NP	Suth Rtn	PR @ NP	NPR @ NP	SP @ NP	Suth Rtn	PR @ NP
1985	529,210	397,396	833,435	1,760,041	440,750	407,998	1,014,590	1,863,338
1986	1,046,632	547,797	941,256	2,535,685	832,995	550,035	1,059,687	2,442,716
1987	393,225	476,172	1,008,684	1,878,081	381,973	514,965	1,018,237	1,915,175
1988	425,796	274,776	711,263	1,411,834	421,948	252,882	860,338	1,535,168
1989	372,573	142,857	538,235	1,053,665	342,424	162,198	565,037	1,069,659
1990	421,202	121,311	594,992	1,137,505	328,345	149,000	473,485	950,830
1991	428,321	161,181	388,274	977,776	354,424	181,321	391,459	927,204
1992	323,796	204,797	492,151	1,020,744	244,524	224,067	586,984	1,055,574
1993	284,215	237,582	493,478	1,015,275	324,556	218,146	790,310	1,333,013
1994	344,438	154,608	521,187	1,020,232	361,956	156,103	543,551	1,061,610
1995	468,795	1,053,602	760,689	2,283,086	228,174	1,092,473	588,942	1,909,589
1996	380,997	290,344	912,724	1,584,065	306,633	334,433	981,820	1,622,886
1997	517,051	684,754	1,024,861	2,226,666	487,201	783,640	878,137	2,148,977
1998	546,770	383,151	1,075,299	2,005,220	467,807	413,421	1,047,863	1,929,091
1999	431,744	829,626	1,060,901	2,322,272	565,621	906,605	1,062,426	2,534,653
2000	488,634	213,140	847,410	1,549,184	394,071	178,056	848,692	1,420,819
2001	430,007	190,090	500,366	1,120,463	269,389	176,758	529,593	975,740
2002	372,895	103,160	412,979	889,033	316,992	115,737	501,240	933,969
2003	268,532	78,494	284,473	631,500	252,014	91,627	288,077	631,718
2004	216,046	77,925	286,110	580,080	226,574	82,964	281,024	590,561
2005	225,959	134,291	206,346	566,597	221,363	132,043	274,664	628,069
Grand Total	8,916,837	6,757,055	13,895,112	29,569,004	7,769,733	7,124,473	14,586,156	29,480,361
				Diff (Calc-Hist)	-1,147,104	367,418	691,044	-88,643

