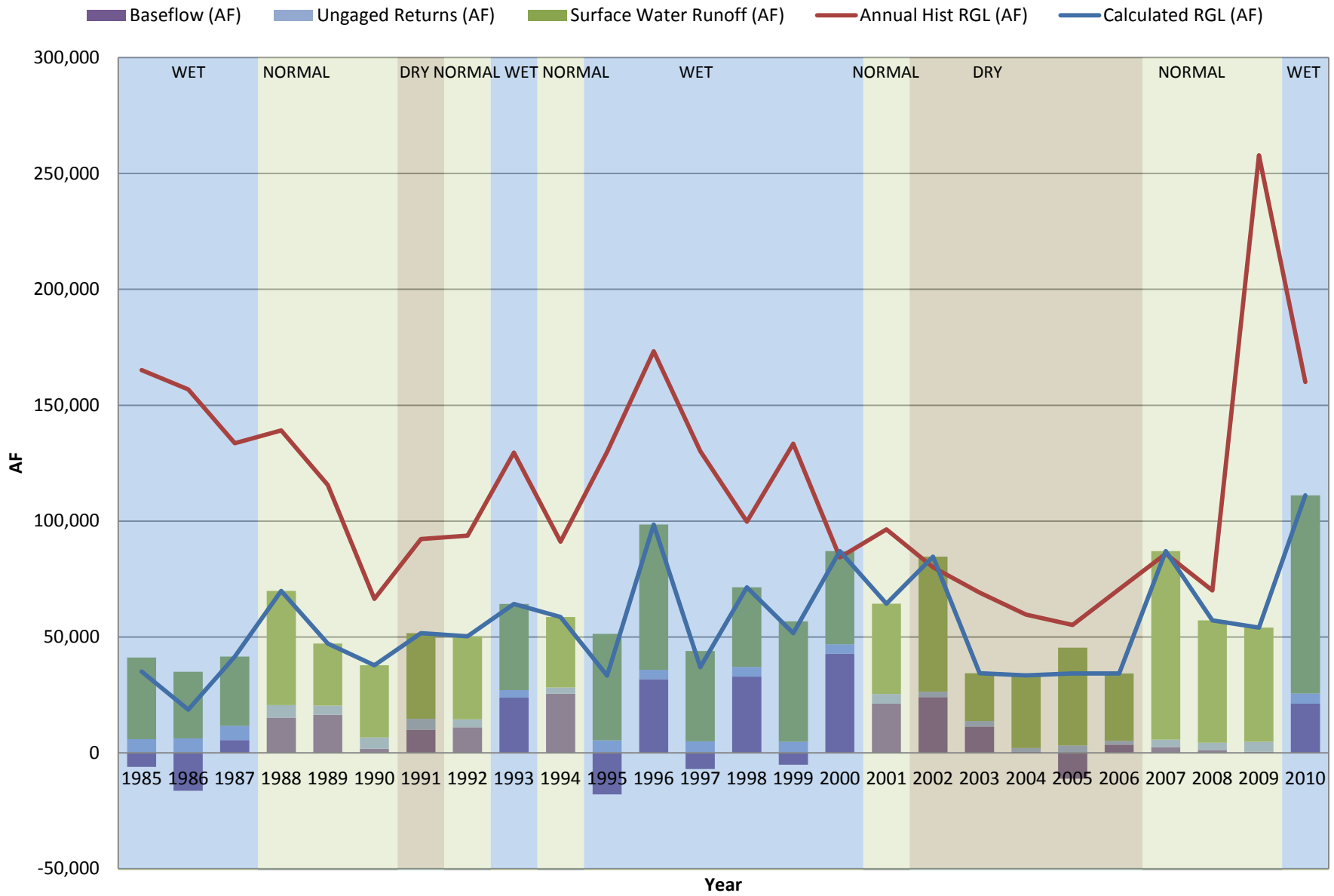


Integrated Model Calibration Results – Reach Gain/Loss

Appendix 8-E includes annual and average daily simulated and calculated historic reach gain/loss for each main stem reach. The plots also include bar charts representing the baseflow, watershed runoff, and canal return flow components that constitute the simulated reach gain/loss values.

Julesburg to North Platte Reach Gain Loss

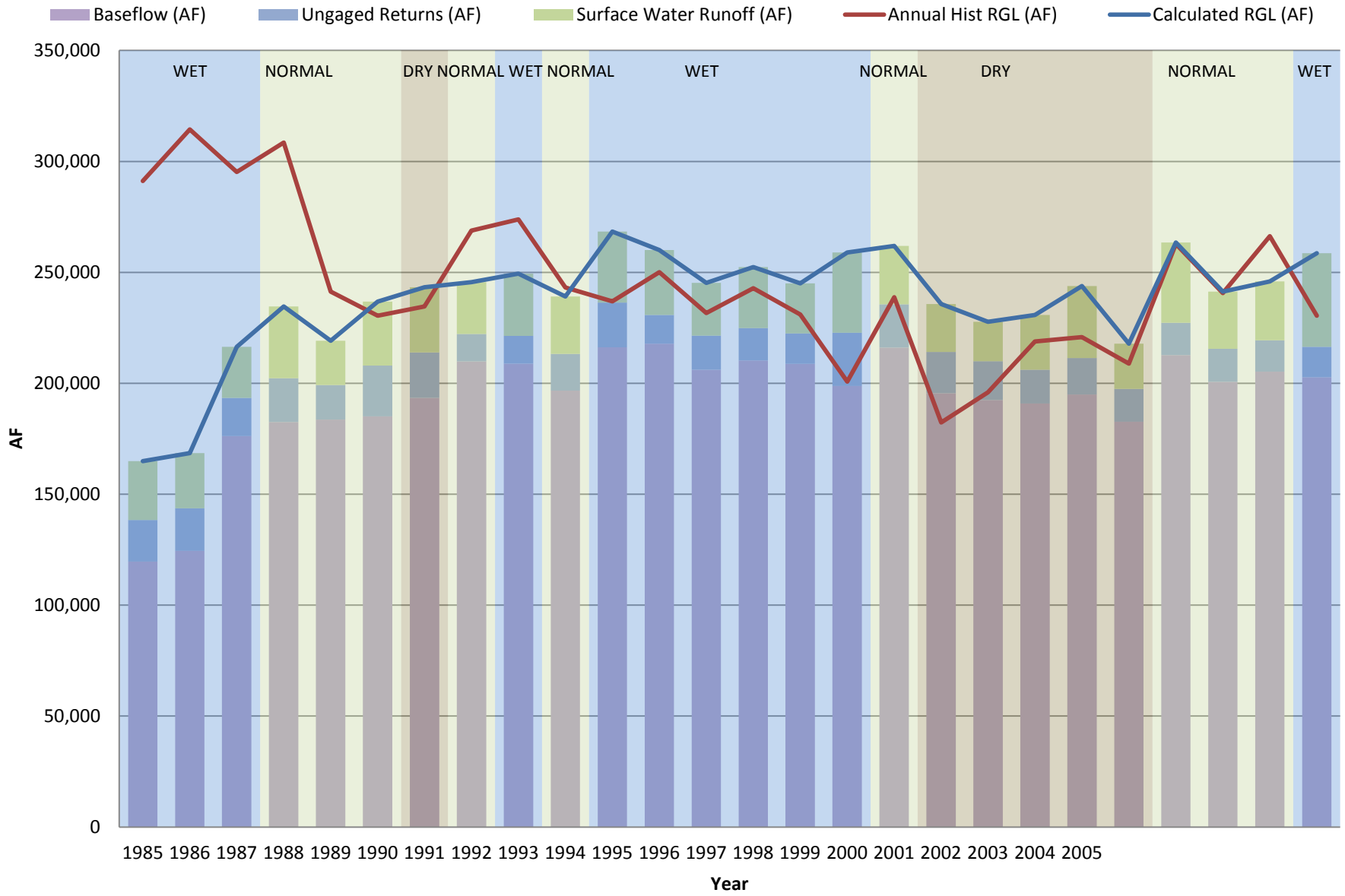


Julesburg to North Platte Average Daily RGL (1990-2010)

Baseflow (AF/day)
 Ungaged Returns (AF/day)
 Surface Water Runoff (AF/day)
 Annual Hist RGL (AF/day)
 Calculated RGL (AF/day)

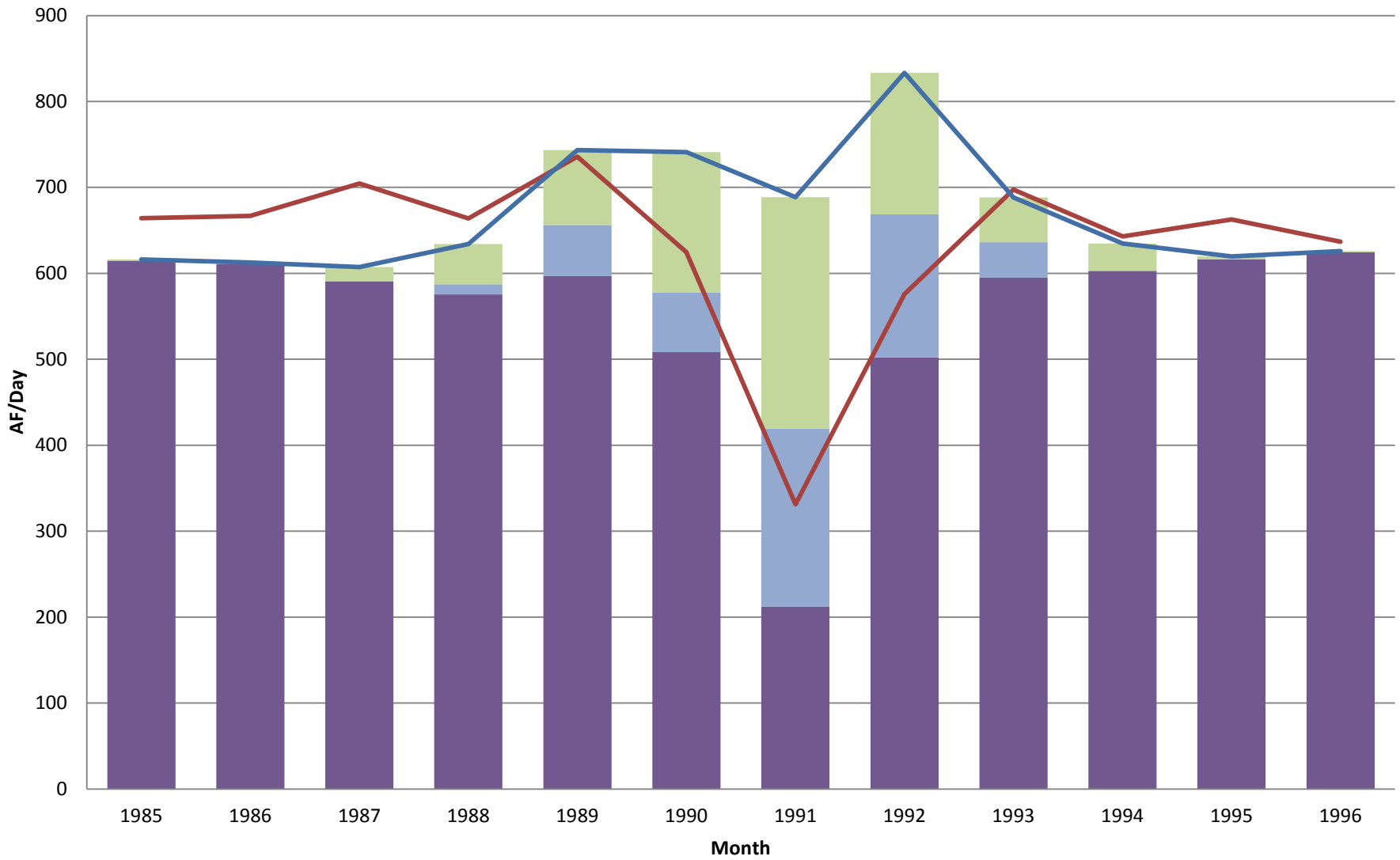


Keystone to North Plate Reach Gain Loss

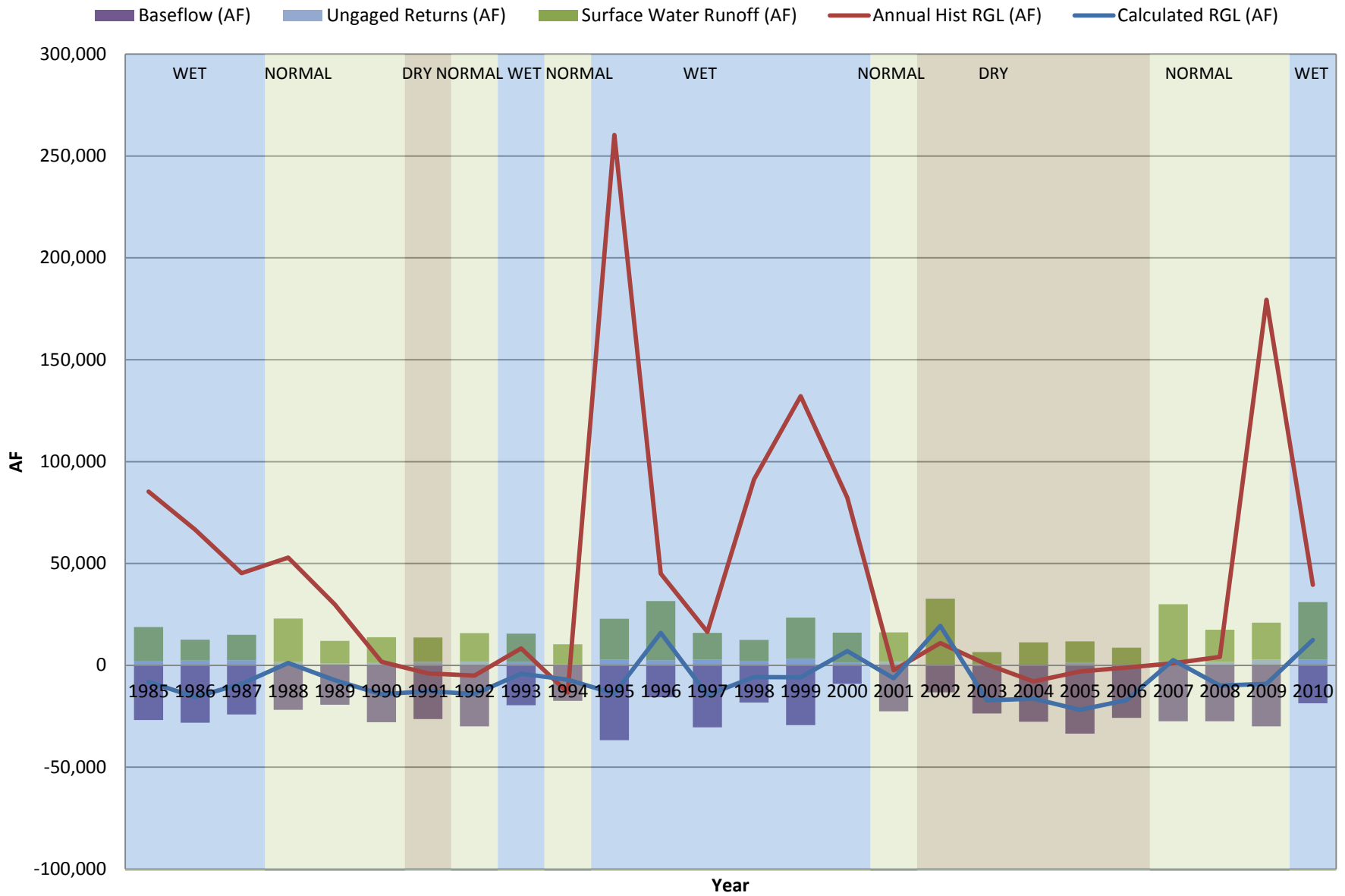


Keystone to North Platte Average Daily RGL (1990-2010)

Baseflow (AF/day) Ungaged Returns (AF/day) Surface Water Runoff (AF/day) Annual Hist RGL (AF/day) Calculated RGL (AF/day)

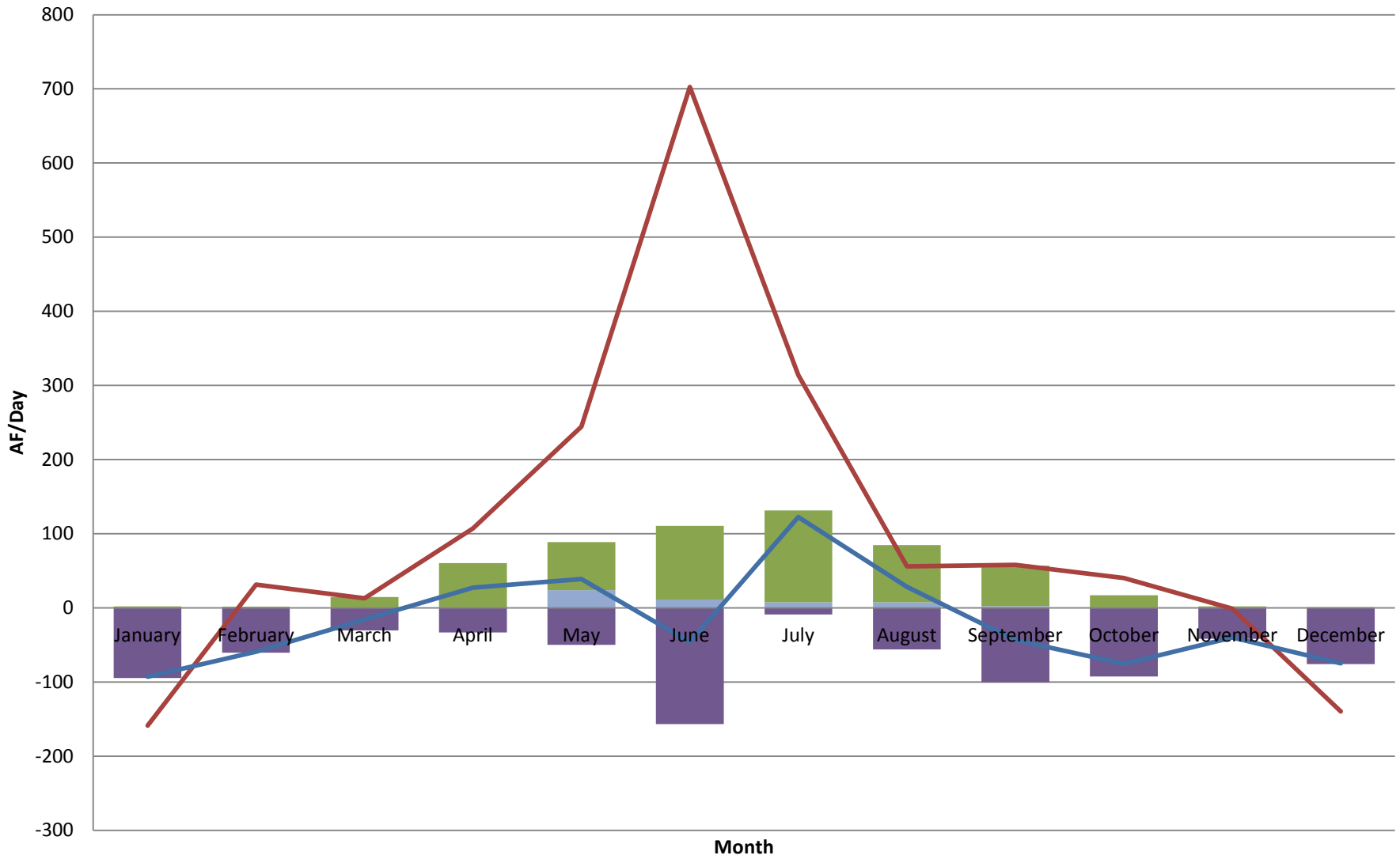


Julesburg to Roscoe Reach Gain Loss

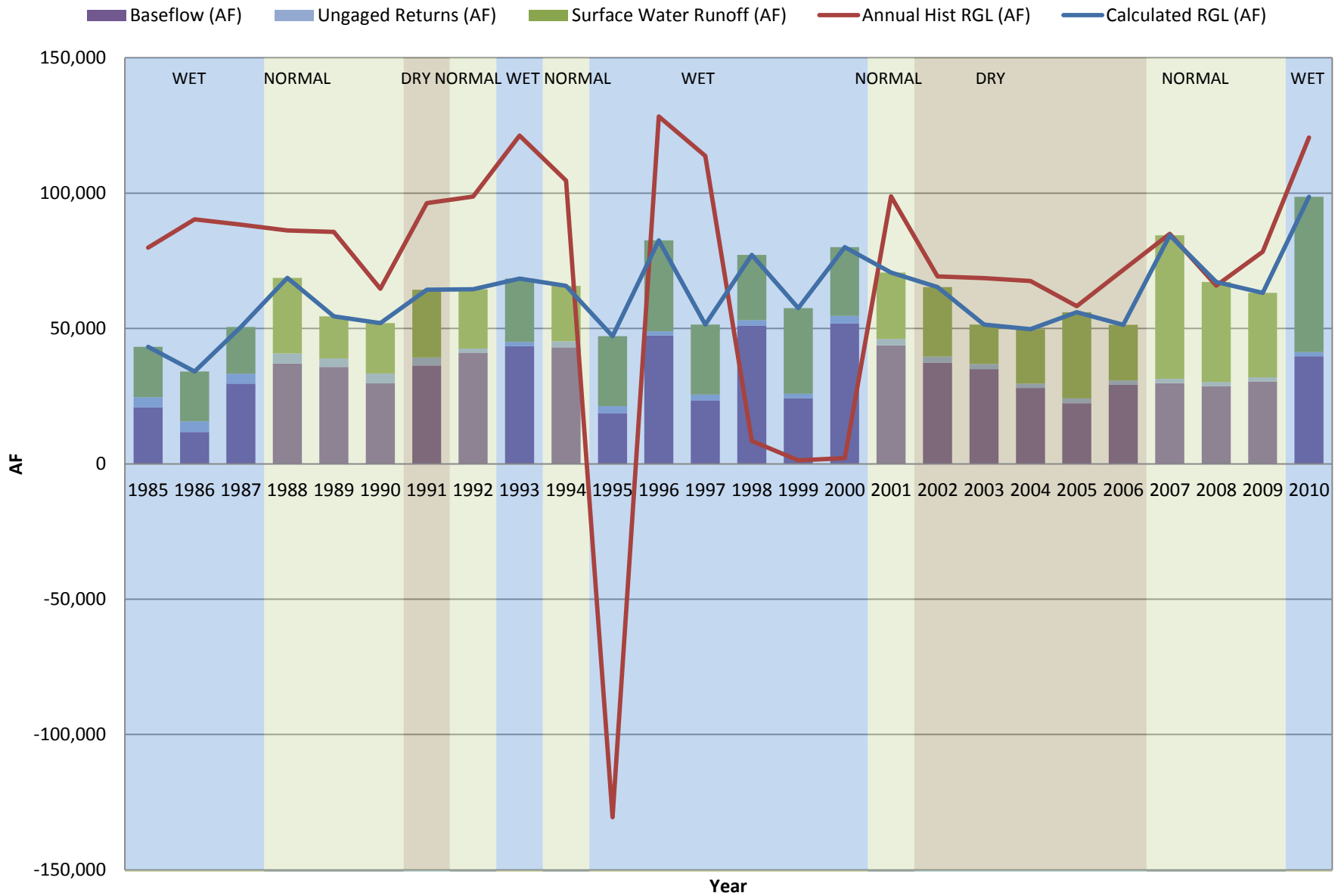


Julesburg to Roscoe Average Daily RGL (1990-2010)

■ Baseflow (AF/day)
 ■ Ungaged Returns (AF/day)
 ■ Surface Water Runoff (AF/day)
 — Annual Hist RGL (AF/day)
 — Calculated RGL (AF/day)

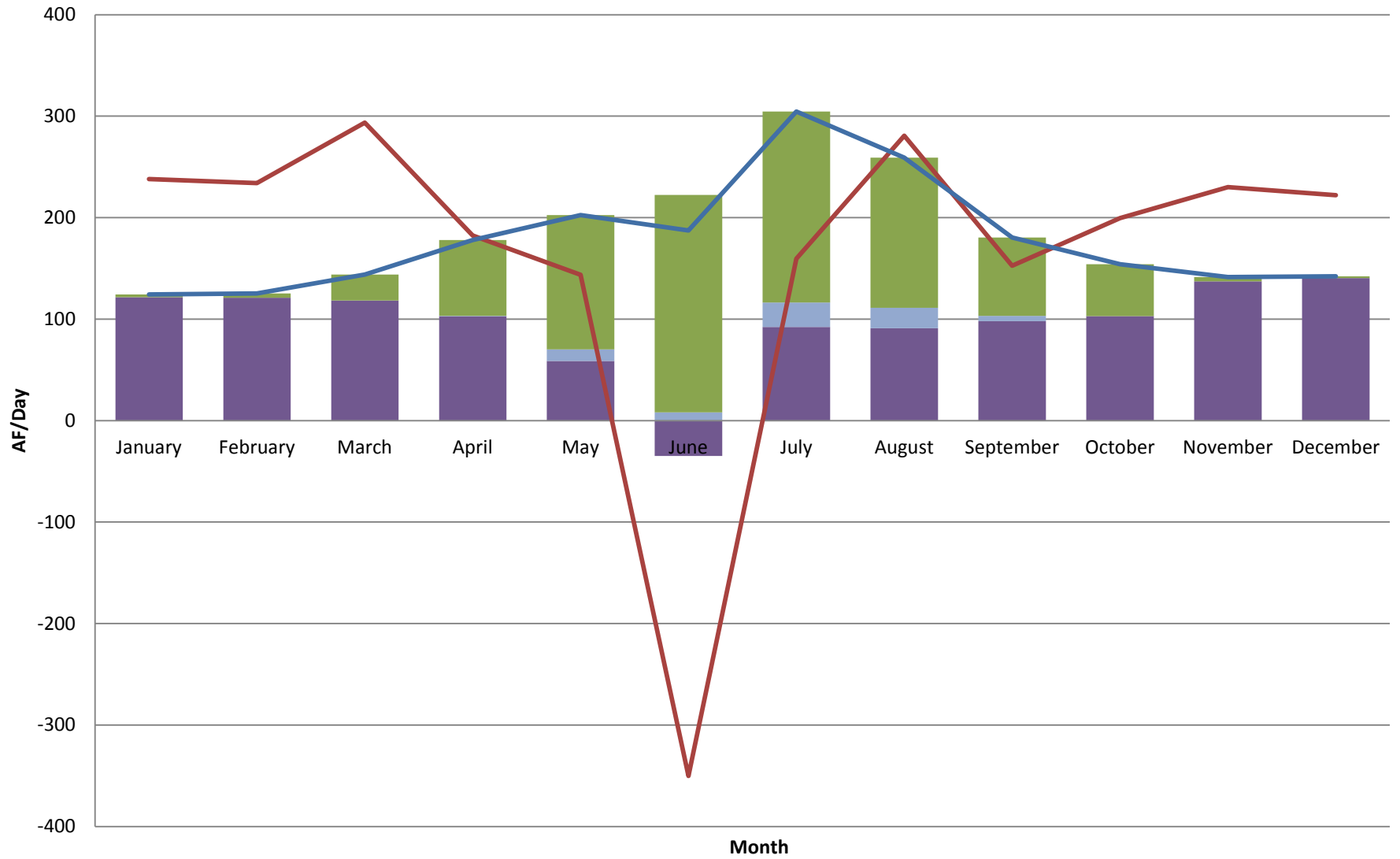


Roscoe to North Platte Reach Gain Loss

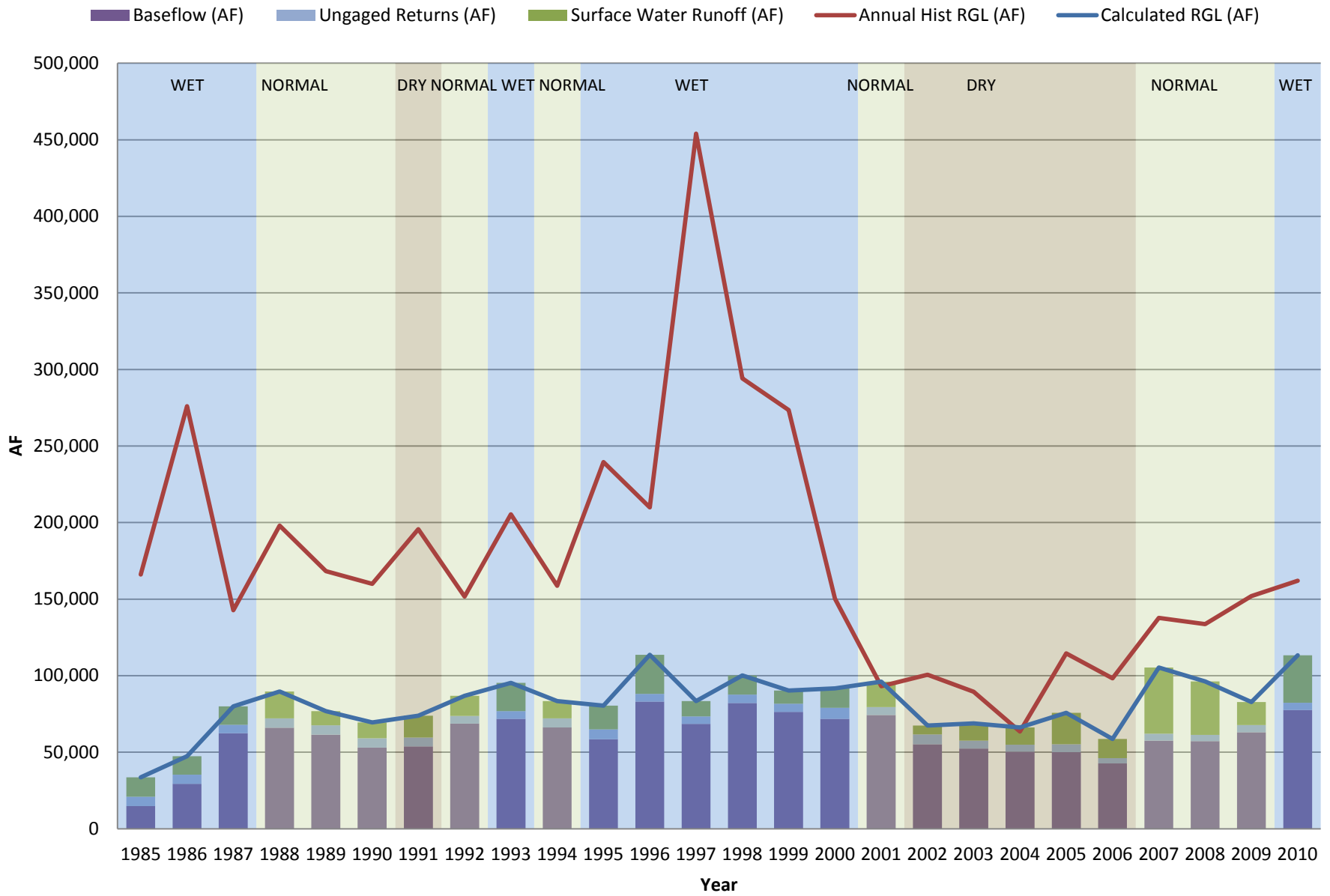


Roscoe to North Platte Average Daily RGL (1990-2010)

Baseflow (AF/day) Ungaged Returns (AF/day) Surface Water Runoff (AF/day) Annual Hist RGL (AF/day) Calculated RGL (AF/day)

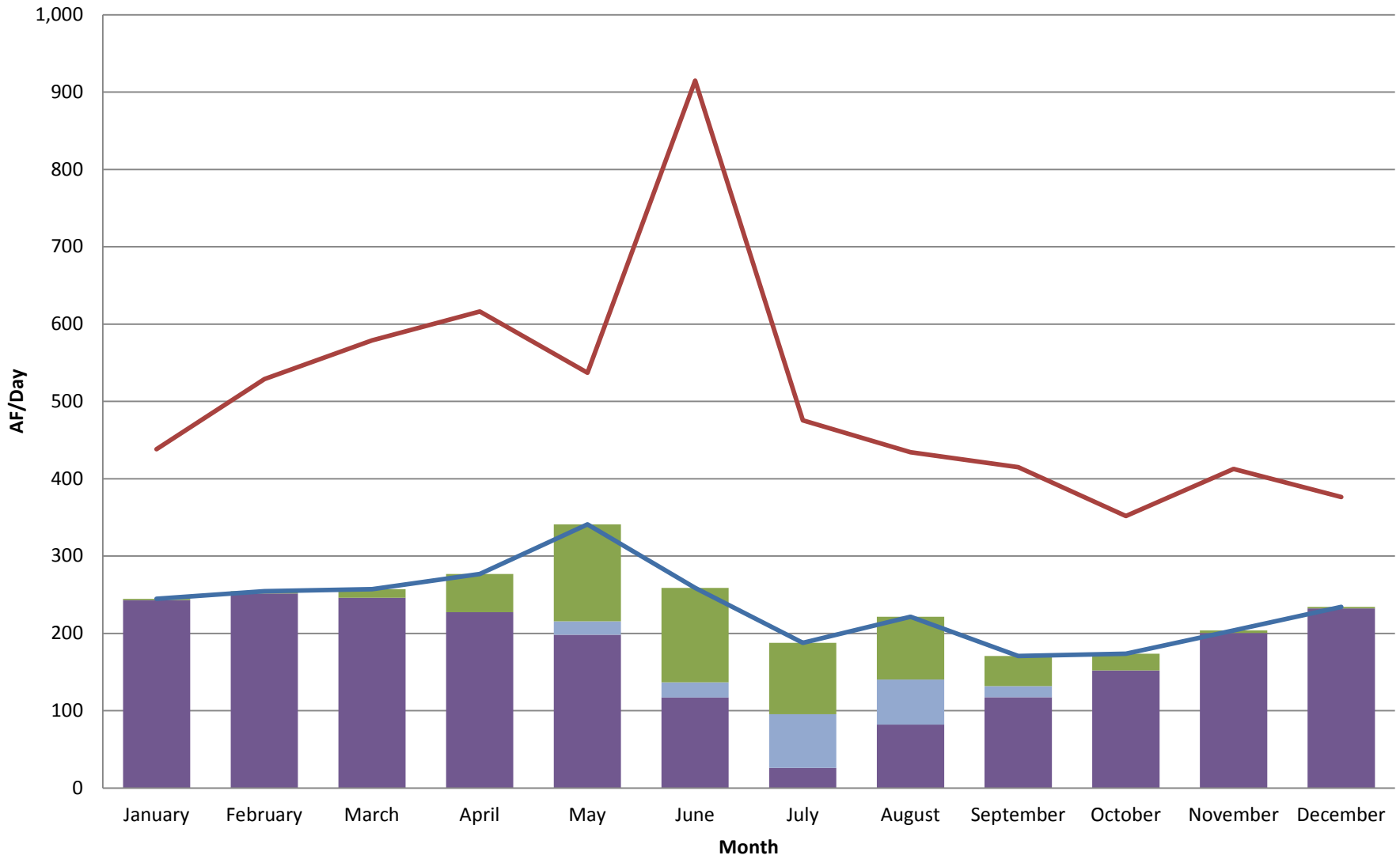


North Platte to Brady Reach Gain Loss

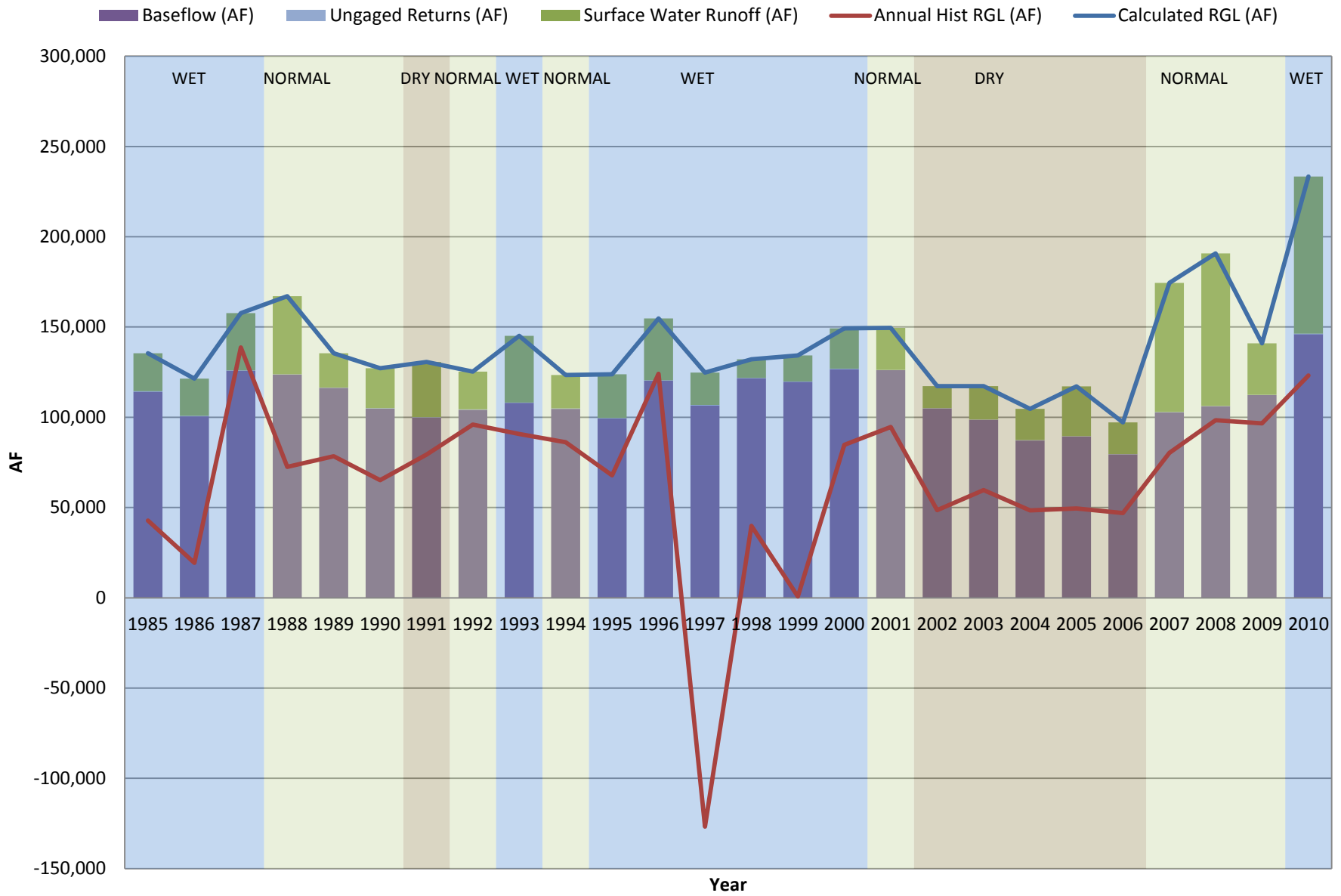


North Platte to Brady Average Daily RGL (1990-2010)

Baseflow (AF/day) Ungaged Returns (AF/day) Surface Water Runoff (AF/day) Annual Hist RGL (AF/day) Calculated RGL (AF/day)

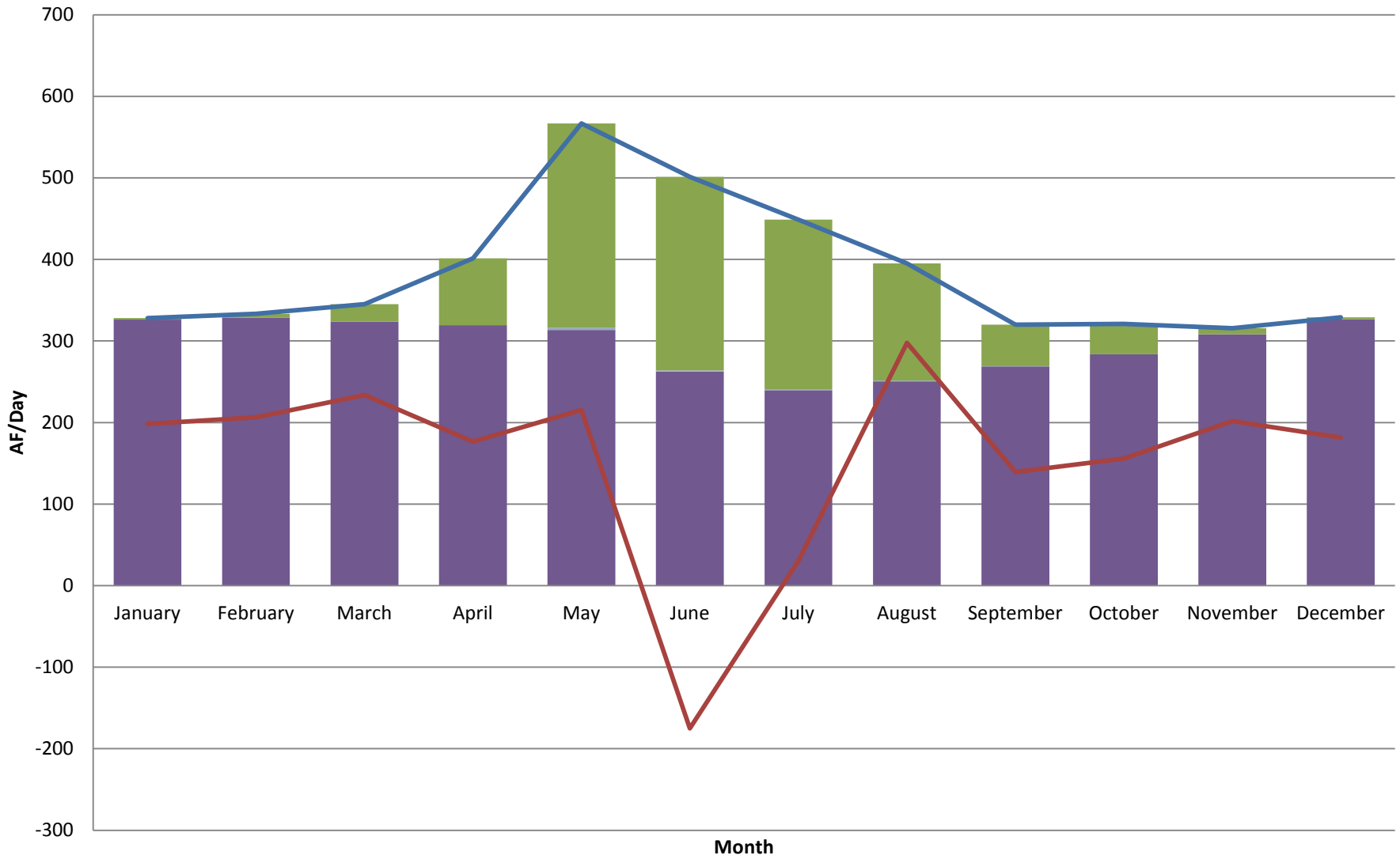


Brady to Cozad Reach Gain Loss

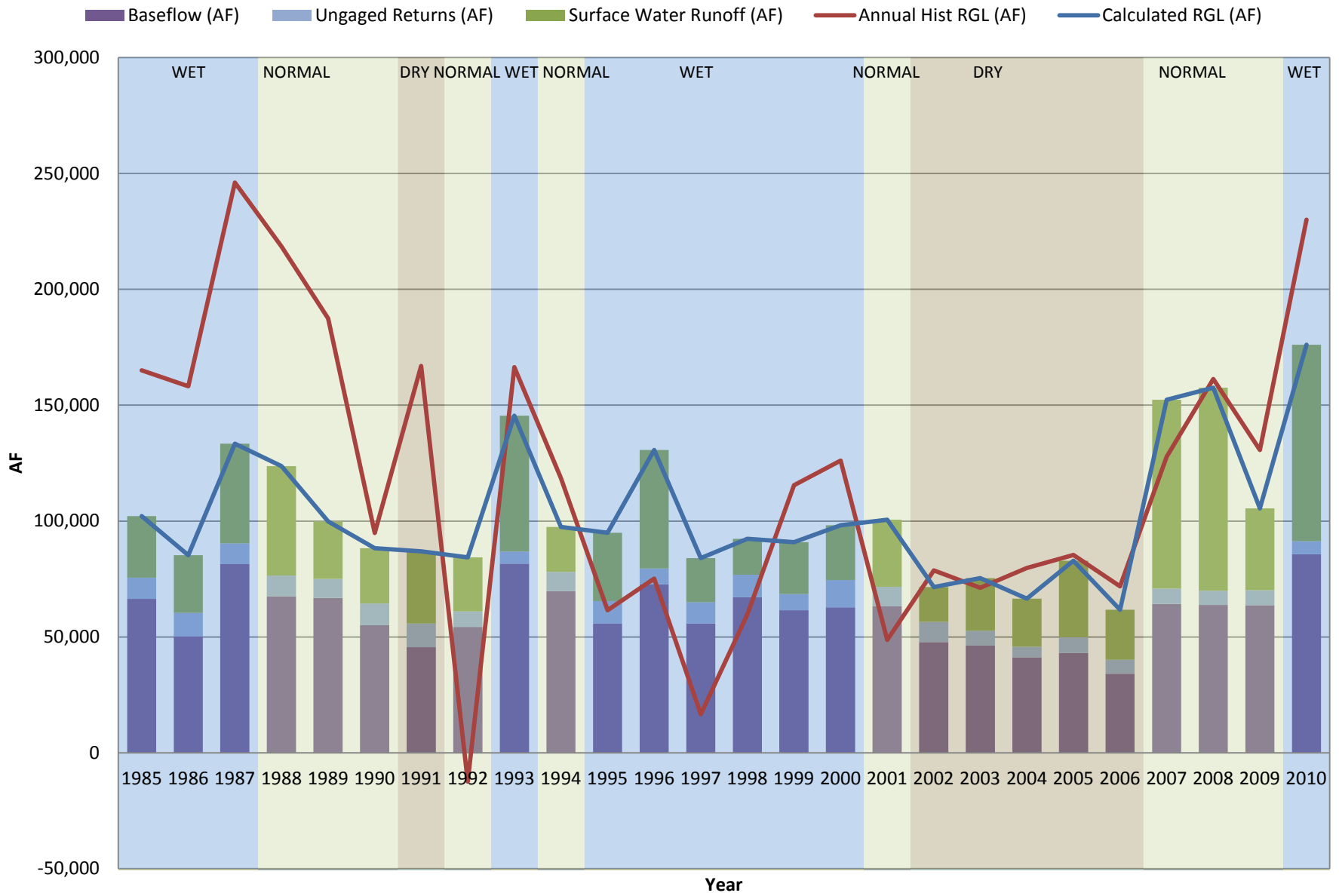


Brady to Cozad Average Daily RGL (1990-2010)

■ Baseflow (AF/day) ■ Ungaged Returns (AF/day) ■ Surface Water Runoff (AF/day) — Annual Hist RGL (AF/day) — Calculated RGL (AF/day)

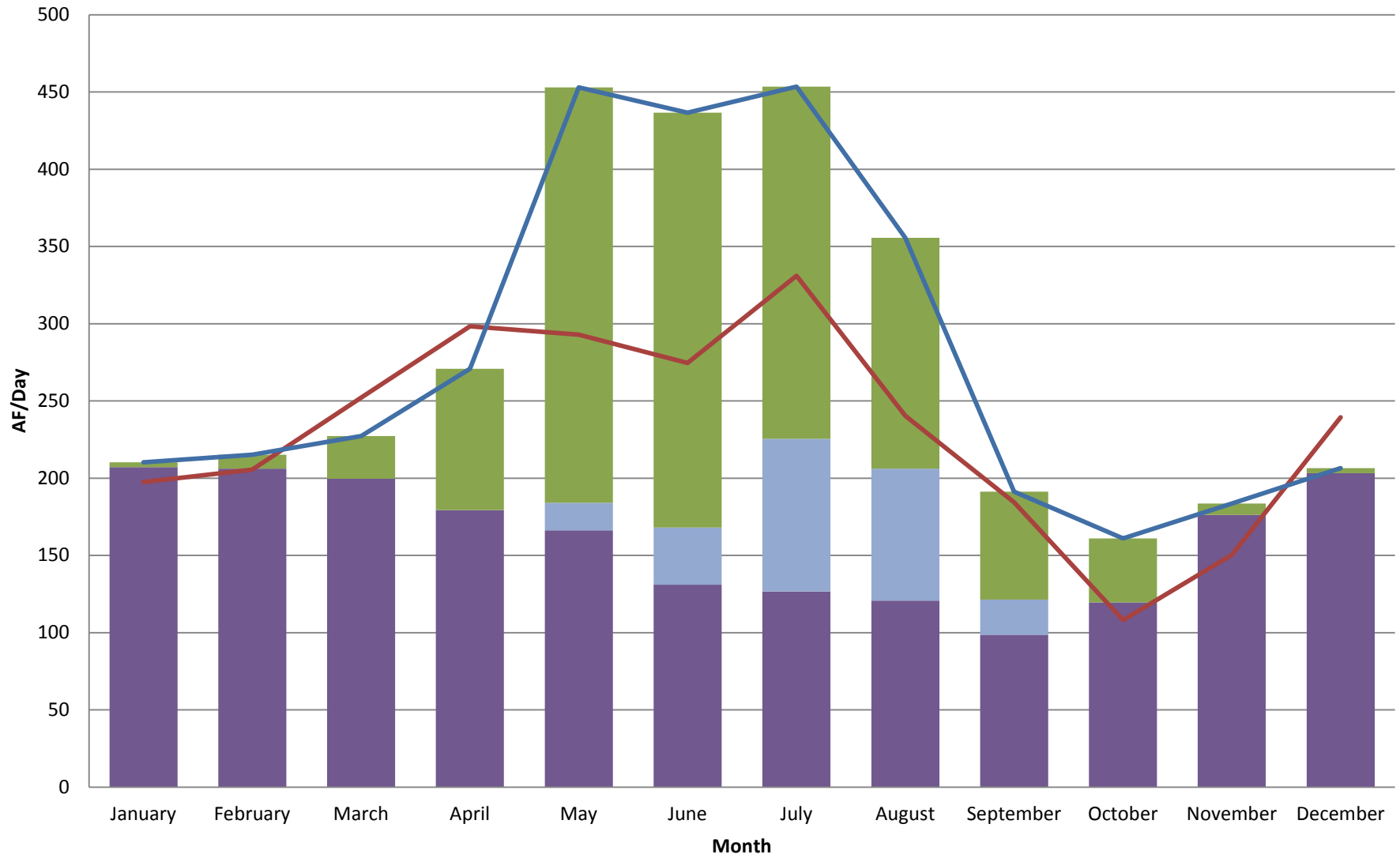


Cozad to Overton Reach Gain Loss



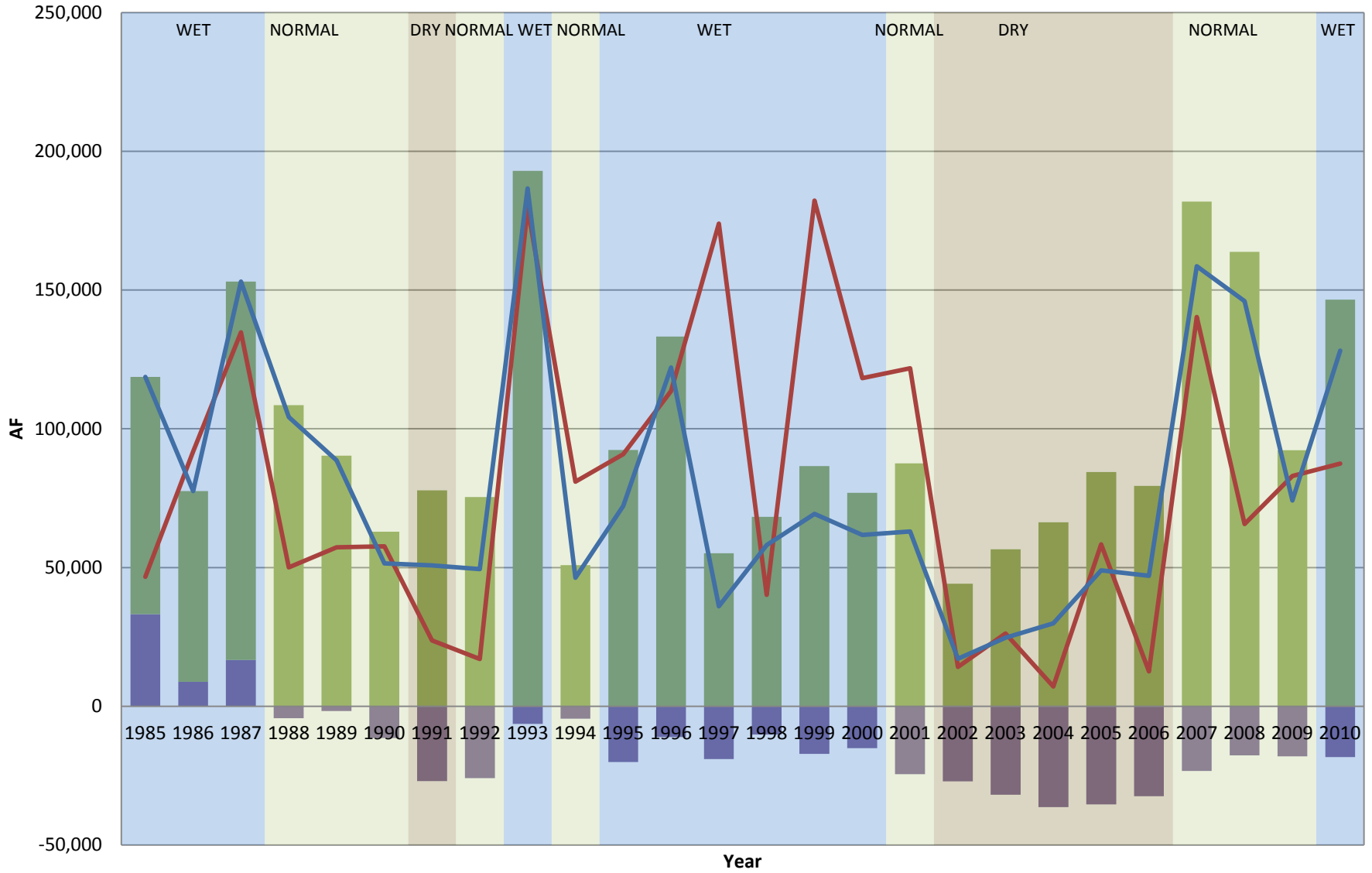
Cozad to Overton Average Daily RGL (1990-2010)

Baseflow (AF/day) Ungaged Returns (AF/day) Surface Water Runoff (AF/day) Annual Hist RGL (AF/day) Calculated RGL (AF/day)



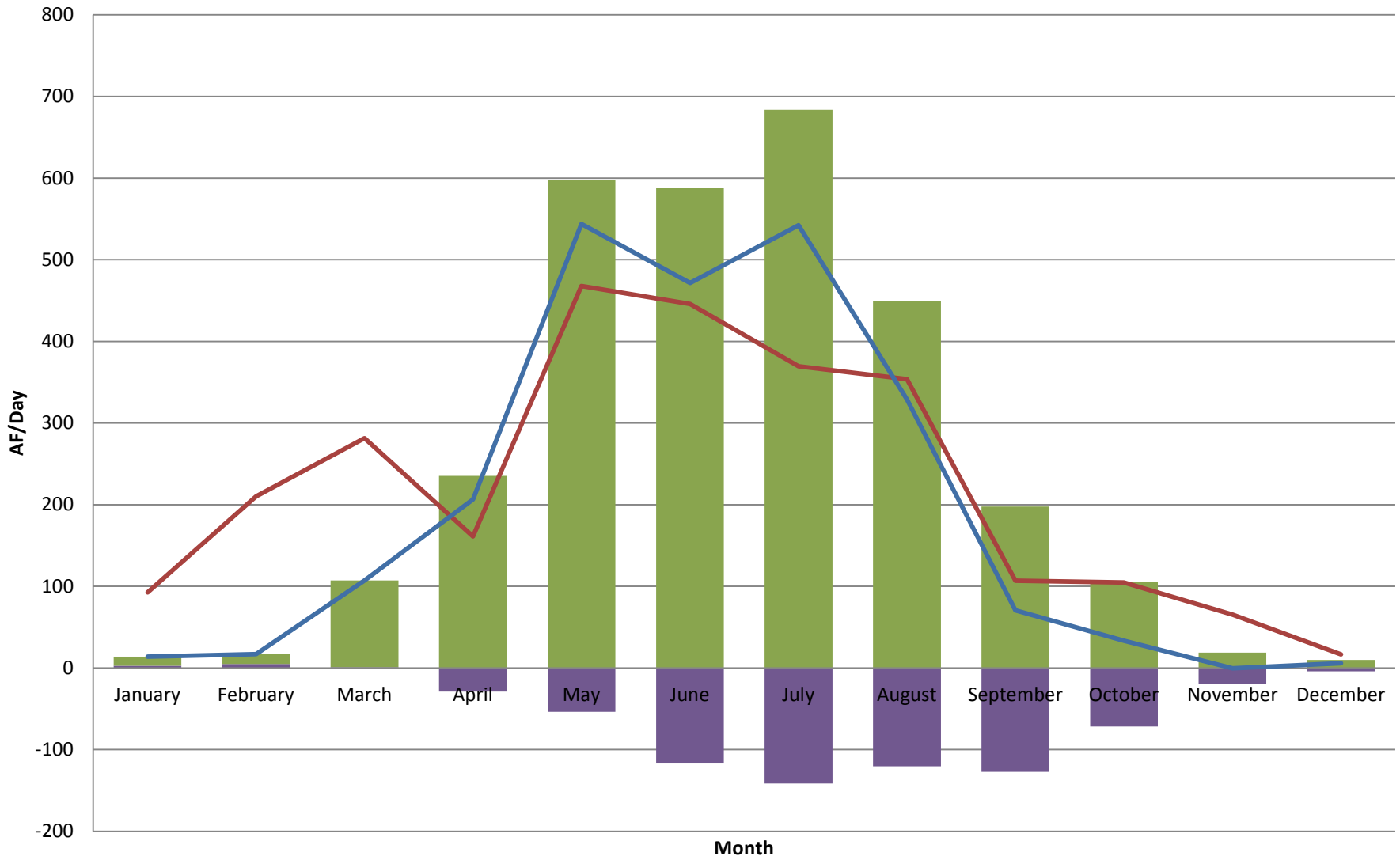
Overton to Odessa Reach Gain Loss

■ Baseflow (AF)
 ■ Ungaged Returns (AF)
 ■ Surface Water Runoff (AF)
 — Annual Hist RGL (AF)
 — Calculated RGL (AF)

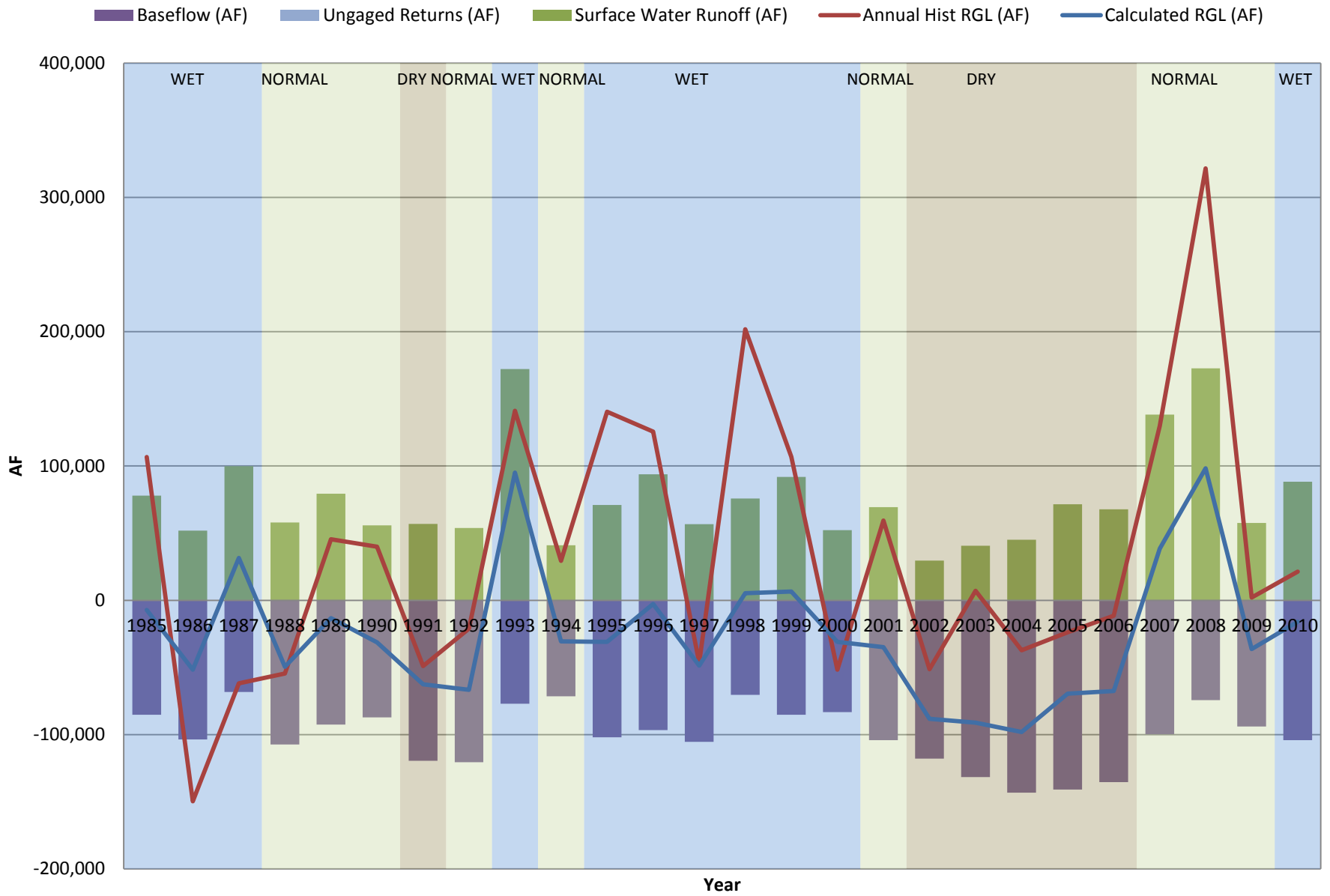


Overton to Odessa Average Daily RGL (1990-2010)

■ Baseflow (AF/day)
 ■ Ungaged Returns (AF/day)
 ■ Surface Water Runoff (AF/day)
 — Annual Hist RGL (AF/day)
 — Calculated RGL (AF/day)

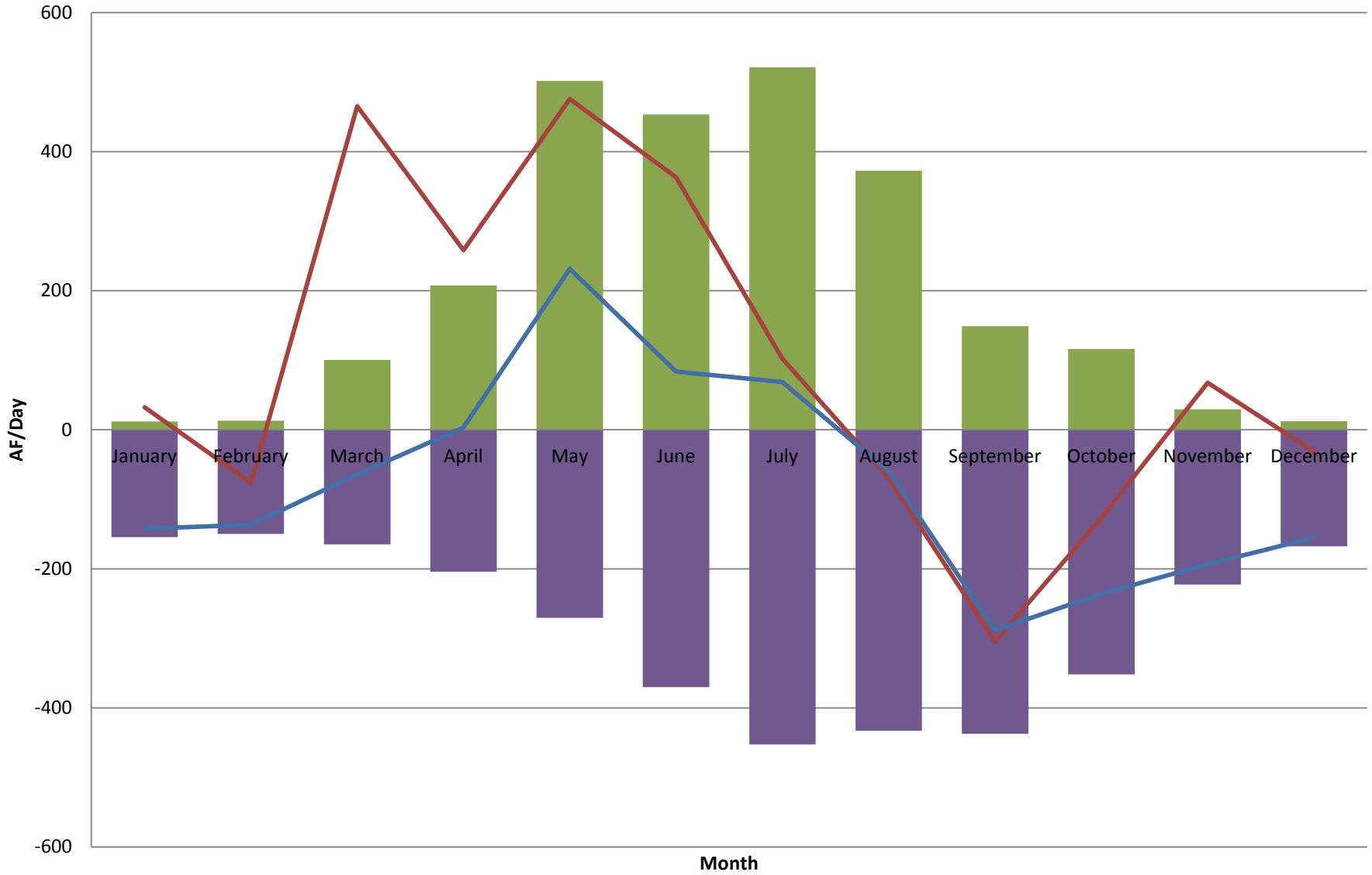


Odessa to Grand Island Reach Gain Loss

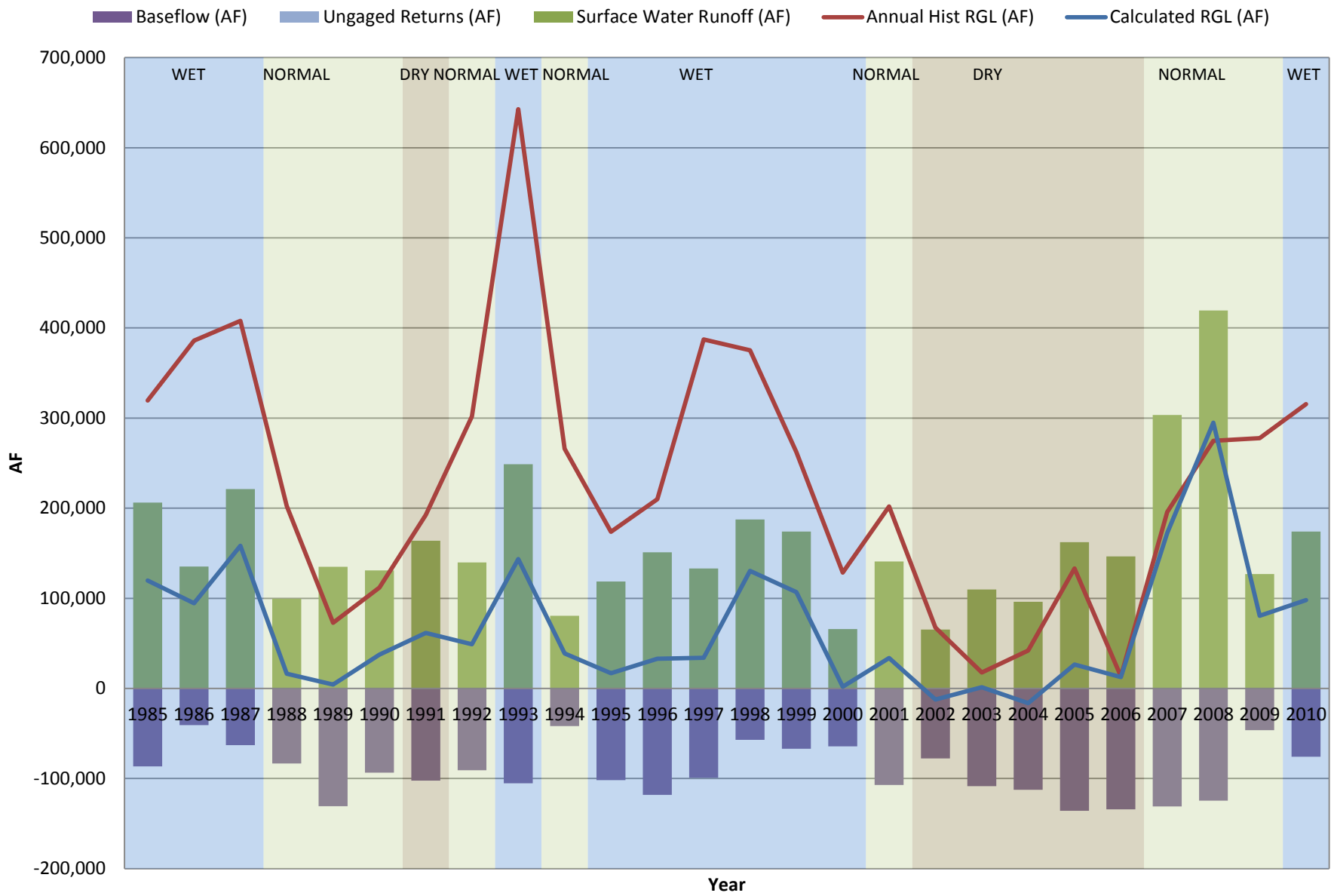


Odessa to Grand Island Average Daily RGL (1990-2010)

■ Baseflow (AF)
 ■ Ungaged Returns (AF/day)
 ■ Surface Water Runoff (AF/day)
 — Annual Hist RGL (AF)
 — Calculated RGL (AF)



Grand Island to Duncan Reach Gain Loss



Grand Island to Duncan Average Daily RGL (1990-2010)

Baseflow (AF/day) Ungaged Returns (AF) Surface Water Runoff (AF/day) Annual Hist RGL (AF/day) Calculated RGL (AF/day)

